



## FROM PAINFUL TO PEACEFUL

Transform the burn care experience with new Prontosan® Wound Gel X

# PATIENTS WITH SEVERE BURNS HAVE A LONG ROAD AHEAD

## PATIENT 1: MARY\*

| Gender | Age | Allergies | Location of wound | Wound type                        |
|--------|-----|-----------|-------------------|-----------------------------------|
| Female | 6   | None      | Back              | Superficial and deep partial burn |

### BURN NOTES:

- Patient tripped and fell into a hot fireplace, resulting in a mix of superficial and deep partial burns
- Patient is young and highly sensitive to pain

### MINOR PATIENTS, MAJOR NEEDS

Over 125,000 children under the age of 16 receive medical treatment for burn injuries each year.<sup>1,2</sup>



### PATIENTS LIKE MARY REQUIRE MORE SENSITIVE TREATMENT<sup>3</sup>

- Fewer dressing changes
- Easy-to-remove dressings
- Techniques that reduce pain

\*Hypothetical patient for discussion purposes only.

## PATIENT 2: FRANK\*

| Gender | Age | Allergies | Location of wound | Wound type                         |
|--------|-----|-----------|-------------------|------------------------------------|
| Male   | 38  | Sulfa     | Arm               | Partial- and full-thickness wounds |

### BURN NOTES:

- Patient is a kitchen restaurant worker—he leaned against a hot oven, giving himself both partial- and full-thickness wounds
- Patient has a known sulfa allergy, dressing choices may be limited
- His burn will require grafting and rehabilitation, potentially lengthening his stay
- Great urgency for him to return home to his family, as he is their primary provider

### THE NEED FOR SPEED

Each of the 128 burn centers in the United States<sup>2</sup> admits an average of 200 patients a year, including those for burn treatment.<sup>1</sup> To handle this high volume, centers must efficiently help these patients heal and transition to the outpatient setting.<sup>2</sup>



### SUBOPTIMAL DRESSINGS CAN BE A BARRIER TO RAPID RECOVERY<sup>4</sup>

- Fail to maintain a moist wound environment
- Fail to protect from secondary infection
- Fail to remove excess exudate
- Fail to separate easily from the wound bed, causing damage on removal

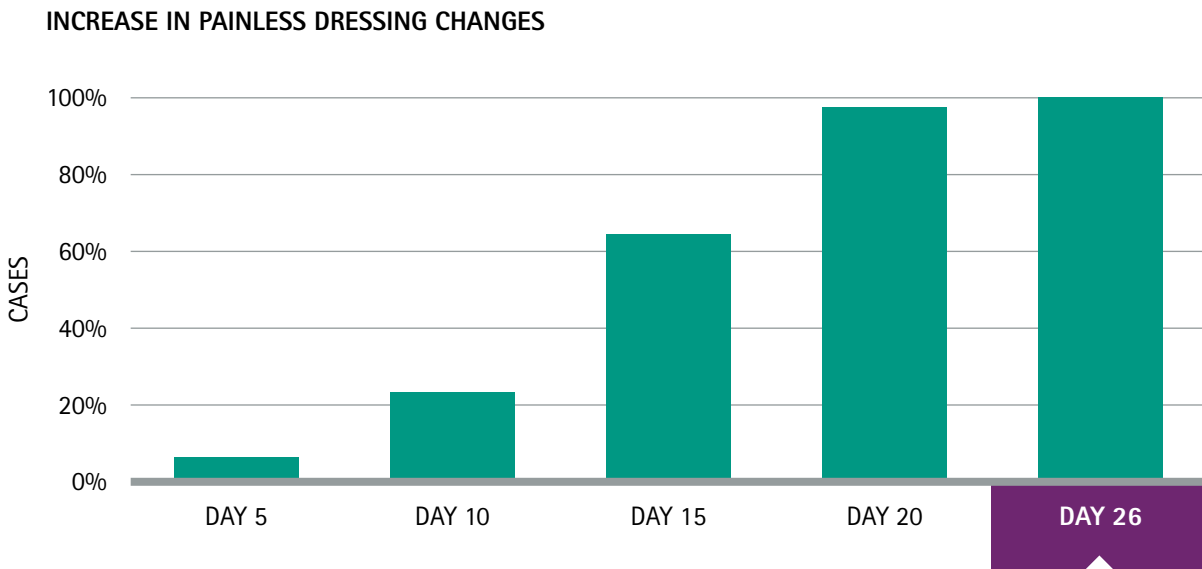
THE HEALING JOURNEY DOESN'T HAVE TO BE SO HARSH.

# Offer a gentle healing experience from the start with Prontosan Wound Gel X

REDUCES THE PAIN OF DAILY DRESSING CHANGES<sup>5</sup>

## STUDY DESIGN:

Burn Centre of Scientific Emergency Institute Dshanelidze in St. Petersburg, 27 patients.  
Treatment of both full- and partial-thickness burns.



**100%** of patients reported **good comfort** during treatment<sup>5</sup>

HELP YOUR BURN PATIENTS EXPERIENCE A LESS PAINFUL HEALING JOURNEY TO RECOVERY<sup>5</sup>

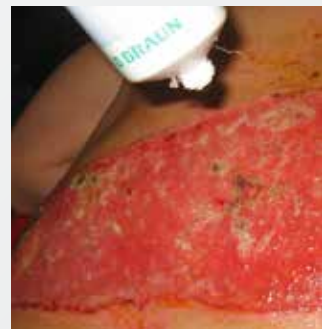
Patient's healing journey\*



Day 0



Day 2



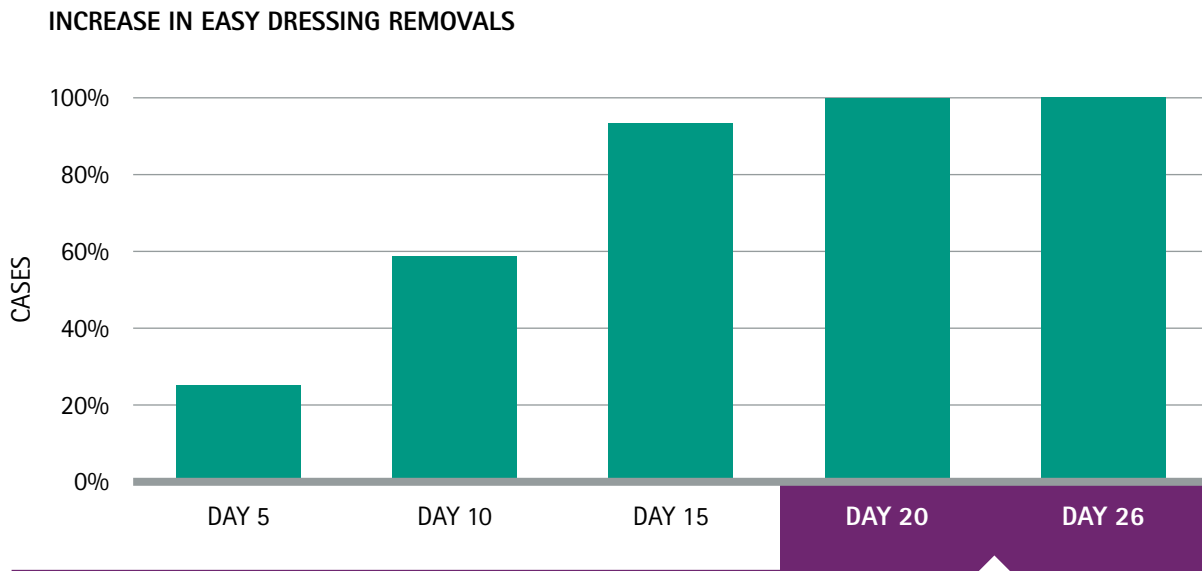
Day 7

\*Data on file.

## GENTLE DRESSING APPLICATION AND REMOVAL<sup>5,6</sup>

### HIGH VISCOSITY, AQUEOUS GEL

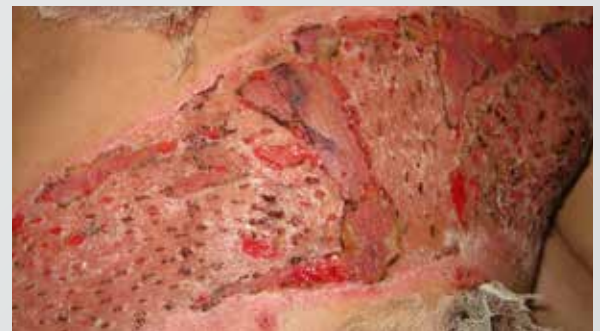
- Adheres to large wound surfaces
- Easily washes off



**100%** of patients found application easy<sup>5</sup>



Day 14



Day 23

# ONCE-DAILY DRESSING CHANGES INCREASE COMFORT ALONG THE WAY

CLEAR GEL LETS YOU VISUALIZE THE WOUND WITHOUT REMOVING THE DRESSING<sup>6</sup>



SUITABLE  
FOR ONCE-  
DAILY USAGE



COMPATIBLE WITH  
MANY SECONDARY  
DRESSINGS



ELIMINATES  
NEEDLESS DRESSING  
CHANGES



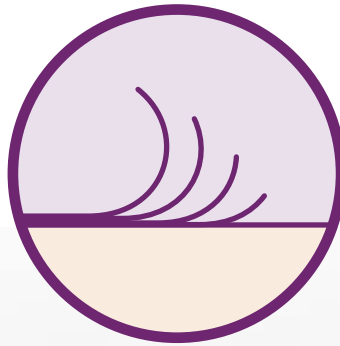
# DESIGNED TO KEEP WOUNDS CLEAN AND REDUCE MANUAL DEBRIDEMENT

UNIQUE INGREDIENT: BETAINE—A SURFACTANT<sup>6</sup>

GEL X SUPPORTS AUTOLYTIC DEBRIDEMENT



Promotes removal of dirt and debris



Aids in removal of wound coating



Helps prevent recontamination within the dressing

## HELPS AVOID THE PITFALLS OF MANUAL DEBRIDEMENT<sup>7</sup>

Increased costs

---

Special training and equipment

---

More frequent dressing changes

---

Potential damage to healthy blood vessels, nerves, and tendons

---

Painful for patient

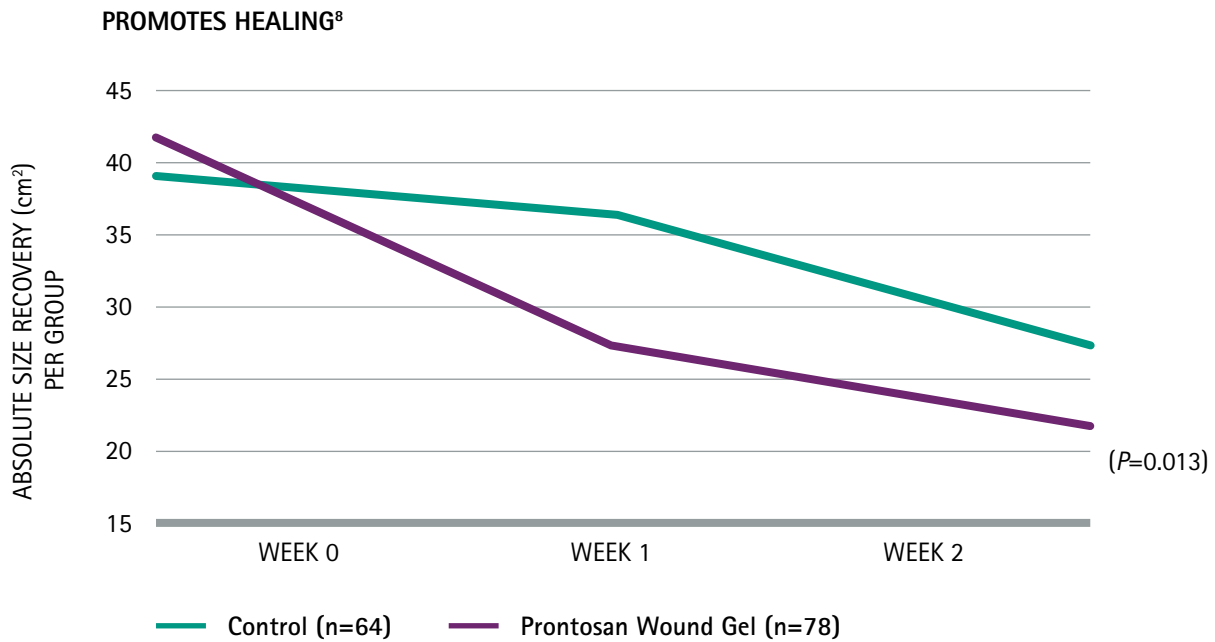
---

Use of anesthetic

---

Increased setup and clean up time

# Put patients on the rapid road to recovery with Prontosan Wound Gel



**44<sup>0</sup>%** reduction in wound size within **2 weeks<sup>8</sup>**

HELP YOUR PATIENTS RECOVER QUICKLY<sup>5</sup>  
Patient's healing journey\*



Day 0

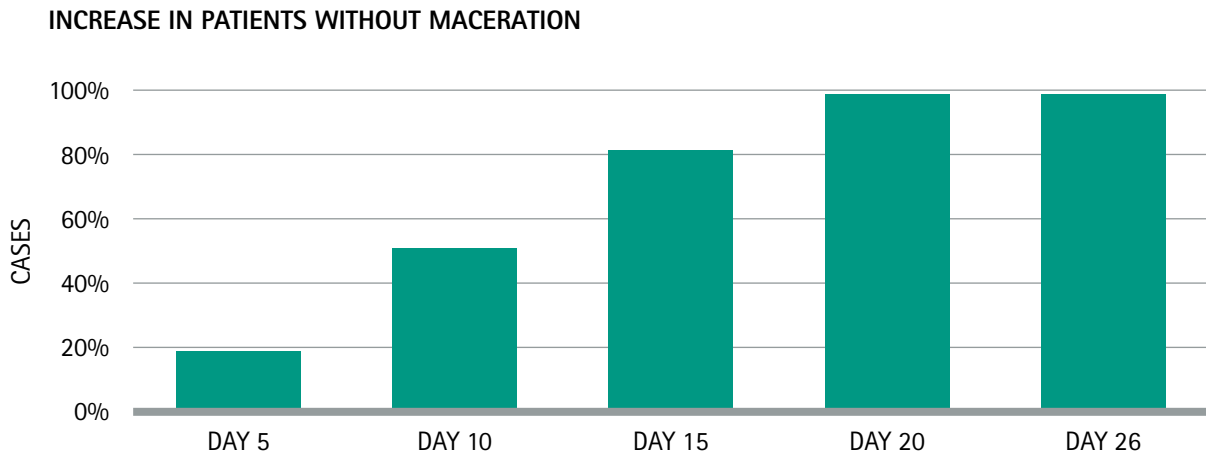
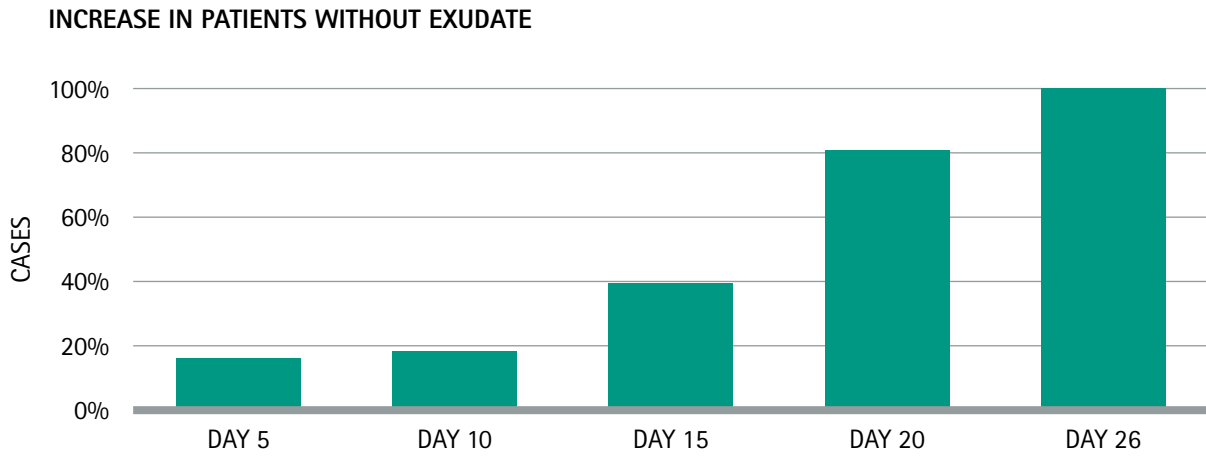


Day 3

\*Data on file.



## SUPPORTS AN IDEAL ENVIRONMENT FOR WOUND HEALING<sup>5</sup>



Day 10



Day 14

# PROVEN ROBUST MICROBIAL BARRIER

REDUCES MICROBIAL PENETRATION THROUGH THE DRESSING\*

EFFECTIVE MICROBIAL BARRIER AGAINST COMMON BURN UNIT PATHOGENS, INCLUDING:

- Gram- bacteria
- Gram+ bacteria
- Fungi
- Yeast

EXCELLENT SAFETY PROFILE AND LOW ALLERGENIC POTENTIAL<sup>6,9</sup>

Safe to use in patients with sulfa allergies

## INGREDIENT: POLYHEXANIDE (PHMB)<sup>6</sup>

DESTROYS BACTERIA, NOT HUMAN TISSUE

Structurally similar to naturally occurring antimicrobial peptides



SUCCESSFULLY MEETS USP<51> CATEGORY 2 CRITERIA\*

INHIBITS GROWTH OF MICROORGANISMS WITHIN THE PRODUCT

The most common pathogens in burn centers are *Staphylococcus* and *Pseudomonas*. Prontosan Wound Gel X addresses both.\*

# EASING THE JOURNEY FROM HOSPITAL TO HOME

TRANSITIONING PATIENTS TO HOME CARE IS A COMPLEX PROCESS THAT HAS MAJOR RISKS<sup>10</sup>

## NEEDS

Ensuring patients/caregivers are equipped with the optimal wound care dressing

SUPPORTS PROPER DRESSING APPLICATION

EFFECTIVELY BALANCES MOISTURE

PROMOTES COST-EFFECTIVE CARE AND HEALING

## RISKS

Patients/caregivers don't comply with care instructions

INCREASED CHANCE OF INFECTION

DELAYED WOUND HEALING

PROLONGED UNNECESSARY PAIN

## Prontosan Wound Gel X is your strategy for maintaining treatment success at home<sup>6</sup>

- ✔ Simple to use
- ✔ Easier dressing change process
- ✔ Confidence in recovery
- ✔ Helps wounds stay clean
- ✔ Robust microbial barrier
- ✔ Facilitates autolytic debridement

YOUR SOLUTION FOR KEEPING PATIENTS ON THE ROAD TO RECOVERY



# Ease your patients' burn care journey with Prontosan Wound Gel X

- ✔ Offers a gentle healing experience from the start<sup>5</sup>
- ✔ Puts patients on the rapid road to recovery<sup>5,8</sup>

The ONLY wound gel with 2 ingredients  
—betaine and polyhexanide

Potent microbial barrier creates a  
favorable wound healing environment



For more information on Prontosan Wound Gel X  
please contact Customer Support: **1-800-227-2862**.  
Visit our website at **[www.ProntosanWoundCare.com](http://www.ProntosanWoundCare.com)**

References: 1. American Burn Association. Burn Incidence and Treatment in the United States: 2015. [http://www.ameriburn.org/resources\\_factsheet.php](http://www.ameriburn.org/resources_factsheet.php). Accessed February 15, 2016. 2. American Burn Association. National Burn Repository 2015 Report. Chicago, IL: American Burn Association; 2015. 3. Selig HF, Lumenta DB, Giretzlehner M, Jeschke MG, Upton D, Kamolz LP. The properties of an "ideal" burn wound dressing—what do we need in daily clinical practice? Results of a worldwide online survey among burn care specialists. *Burns*. 2012; 38(7):960-966. 4. Sussman G. Management of the wound environment with dressings and topical agents. In: Sussman C, Bates-Jensen BM, eds. *Wound Care: A Collaborative Practice Manual*. 4th ed. Baltimore, MD: Lippincott Williams & Wilkins; 2012:502-520. 5. Wound Gel X D0F. Bethlehem, PA: B. Braun; 2014. 6. Bradbury S, Fletcher J. Prontosan Made Easy. *Wounds Int*. 2011;2(2):1-6. 7. Vowden K, Vowden P. Debridement made easy. *Wounds Int*. 2011;7(4):1-4. 8. Valenzuela AR, Peruchio NS. [The effectiveness of a 0.1% polyhexanide gel]. *Rev Enferm*. 2008;31(4):7-12. 9. Prontosan Wound Gel X IFU. Bethlehem, PA: B. Braun. November 2014. 10. Dabiri G, Damstetter E, Phillips T. Choosing a wound dressing based on common wound characteristics. *Adv Wound Care (New Rochelle)*. 2016;5(1):32-41.