

Dialog⁺ Evolution Hemodialysis System Features

Clear icons allow faster workflows.



Single Needle (SN) Therapy

Unique pressure-pressure controlled SN process results in a more constant pressure in the dialyzer, minimum recirculation and a low impact in the shunt as a result of indirect blood transfer.



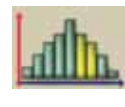
Automatic Blood Pressure Measurement (ABPM)

Automatic blood pressure measurement function allows automatic readings at regular intervals. BP and pulse rate are clearly displayed on the main screen, allowing easier monitoring by the staff.



Pre- and Post- Pump Arterial Pressure Monitoring

Can help avoid clotted dialyzers when dialyzing without heparin.



Profiling Capability

UF, Na, Bicarb, Dialysate Flow, Temperature, and Heparin Parameters can all be profiled.



Event Timer

An individualized event, such as a time to give patient medication, can be programmed to sound a reminder alarm during treatment



Simple setup can be done with only two user interactions.

Advanced Technical Service Mode (TSM)

- Allows technician to test internal components
- Reduces troubleshooting and preventative maintenance time
- Provides Service History Information
- Graphical display provides overview of sub-system components
- Configuration screen allows technician to set default treatment values and modes

Advancement in Technology

- New circuit board design and placement
- Fast direct access to all internal components
- Upgraded pump motors and hydraulic components
- New heat exchanger and heating system for improved power efficiency

Technical Data

Physical size of machine	60 in. H x 28 in. W x 22 in. D
Dialysate Temperature Range :	33 - 40°
Profiling :	User-definable Linear, Exponential
Conductivity Range :	12.5-16 mS/cm
Profiling :	Total Sodium and Bicarbonate User definable, Linear, Exponential
Dialysate Flow Range :	300 - 800 ml/min
Profiling :	User definable, Linear, Exponential
Ultrafiltration Range :	0 - 3,000 ml/hr
Profiling :	User-definable, 20 Pre-set Profiles
Extracorporeal Circuit Blood Flow Range :	50 - 600 ml/min
Settings :	10 mL/min increments
Heparin Flow Range :	1-10 ml/hr
Settings :	0.1 ml/hr increments
Profiling :	User definable, Linear, Exponential
Venous Pressure Range :	20 - 390 mmHg.
Arterial Pressure : Range :	Pre- or Post-pump monitoring -400 - +700 mmHg.
Air Detection :	Ultrasonic sensor on venous line
Red Sensors :	Detect blood in extracorporeal circuit to initiate an automatic heparin bolus at beginning of dialysis and stop blood pump at the end of dialysis
	Venous line - at air detector

Streamline and Locksite are registered trademarks of Medisystems Corporation, a NxStage Company
Rx only ©2011 B. Braun Medical Inc. 824 12th Avenue, Bethlehem PA 18018. All rights reserved.
RTD.024 rev 7/11 JH



Disinfection Cycles

Chemical, Thermal, Decalcification, Citric/Thermal Cycles with programmable dwell times and user-definable short programs. Concentrate wands are loaded into machine and disinfected during the selected cycle.

User Interface Innovations

- High Resolution (1024x768) Touch Screen combined with off screen Hard Keys.
- Icon Driven User interface
- On-screen HELP functions
- Automatic Dialyzer Rinsing Program
- On-Line Trending Graphs
- On-Line Technical Data

Unique Features

- User-definable Profiles for UF, Na, Bicarb, Dialysate Flow, Temperature, and Heparin
- Patient Therapy Card Reader for patient specific parameters for use in subsequent treatments
- Auto On/Off timer - machine will automatically turn off after completion of a disinfection cycle and automatically turn on at the programmed time
- BIC Holder for Solcart B® cartridges

For more information, contact a B. Braun Renal Therapies Division representative at **1-800-848-2066**, or email us at rtd.us@bbraun.com.

Dialog⁺ Evolution Hemodialysis System

Creating Dimensions in Treatment Quality



Evolving technologies to meet customer needs

B | BRAUN
SHARING EXPERTISE

www.bbrounusa.com



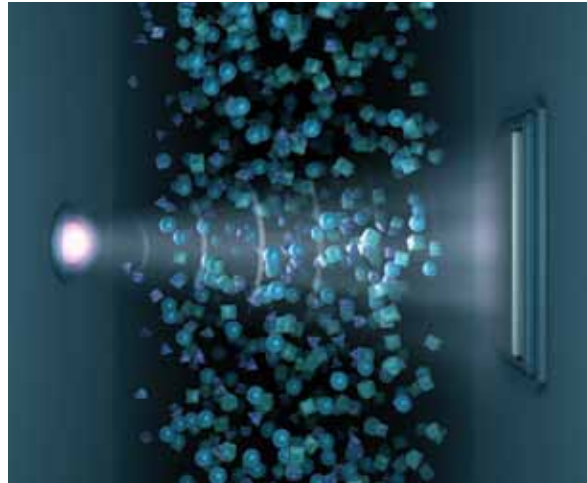
B | BRAUN
SHARING EXPERTISE

Dialog⁺ Evolution Hemodialysis System

Simplifies setup to save you time and help eliminate errors. Automatically begins self-test and automatically begins recirculation or standby mode. Reduced user intervention. Easy to learn.

Adimea™ Actual Dialysis Dose Monitoring System

Provides a continuous, real time measurement of dialysis dose (Kt/V or URR). Ultraviolet light is used to measure the change in the concentration of uremic substances in the spent dialysate. Dialog⁺ graphically displays the Adimea curve and can notify the user if the target Kt/V will not be achieved so the user can act to improve the treatment outcome within the prescribed dose. Adimea can help ensure that patients achieve their dialysis dose prescription every treatment. No additional disposable is required and only the patient's pre-dialysis weight needs to be entered.



Streamline® Bloodlines

Pressure pods replace transducer protectors to help eliminate nuisance alarms and clotting. Locksite® needle-free access ports are designed to reduce the risk of needle-stick injuries. Air-free design extended to reduce heparin usage and risk of clotting. Streamline uses less tubing and few connections to simplify use while lowering saline and disposal costs.



Bicarbonate Cartridge Holder

allows the use of the Solcart B® bicarbonate cartridges for dispensing of bicarbonate.



UltraPureFluid-System (UPF) and Diacap® Ultra pyrogen filter

produces ultra pure dialysate to reduce the risk of contaminated dialysis fluid and its associated complications.



Patient Therapy Card Reader

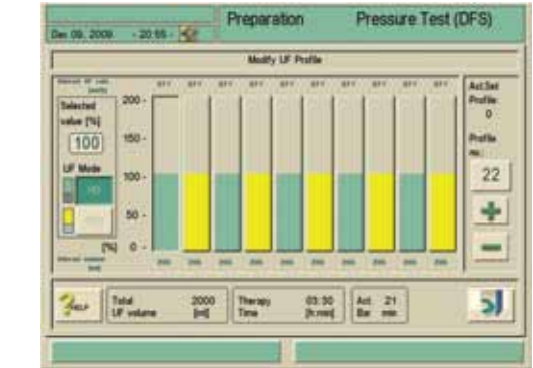
The therapy card stores the patients machine settings to allow for quick and accurate setup. Adimea data is also stored on the Therapy Card so past Adimea results can be viewed while the patient is being treated. Changes in Adimea Kt/V trends can be reviewed so the user can see how the patients dialysis dose has changed over time.



Your Clinical Assistant for Hemodialysis Therapy



Acute Therapy Features



PULSE Therapy

PULSE Therapy profiles are designed for extended treatment times. PULSE treatment profiles combine sequential and hemodialysis for patients that require a gradual fluid and/or solute removal, such as unstable patients on extended treatment, severe fluid overload, drug toxicity or severe uremia.



Millenium RO

has a stainless steel RO pump and pressure vessels for maximum strength and reliability. Panel mounted pressure gauges display critical pump and product water pressures. The RO system's space efficient design allows portability and can easily be placed on the cart with the Dialog+ Hemodialysis System.

Dialog+ Hemodialysis System with Millenium RO and cart