



Dialog⁺ Evolution Hemodialysis System

Technical Information

Designed for high quality dialysis treatment and cost effectiveness



Simplified circuitry and components
Easy access to internal components from both the front and rear of machine.



Clear separation of hydraulics and electronics, with mechanically coded boards in fixed positions.



Rotating screen allows technician to easily view the touch screen integrated Technical Service Mode (TSM).



The TSM supports the technician in trouble shooting to help in reducing down time and service calls.



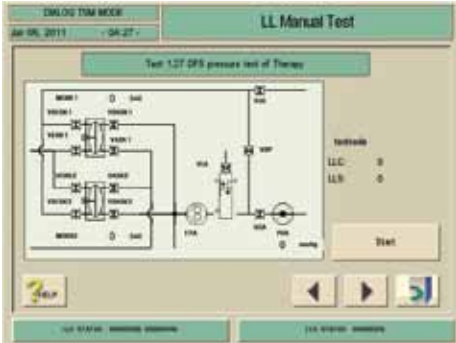
Noise reduction Separation of gear pumps from chassis leads to a 50% reduction in running noise, making night time and in-center dialysis more comfortable for patients.



Water Block Smaller volume allows machine to quickly achieve conductivity and temperature.

Technical Benefits

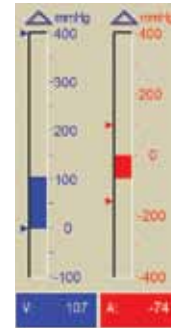
Continuous advancements in technology and patient treatment.



Technical Service Mode (TSM) displays a graphical overview of sub-system components and parameters. Screens allow technician to test all active hydraulic and electronic components.



Heat Exchanger is designed to reduce power consumption with preheated water technology.



Enhanced Arterial and Venous Pressure Monitoring Safety feature alarms when system detects blocked or wet transducer protectors, or disconnected transducer lines.

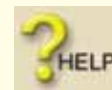


On-Line Technical Data gives the operator real-time information to help troubleshoot machine problems while they are occurring.

Icons save time and simplify procedures for operators and technicians.



Auto Rinsing program can be customized for each patient and/or dialyzer type.



On Line HELP with the touch of an icon.



Stand by Mode stops dialysate flow at the end of preparation to prevent waste of water and concentrates. Particularly useful when a patient is not immediately ready for treatment.



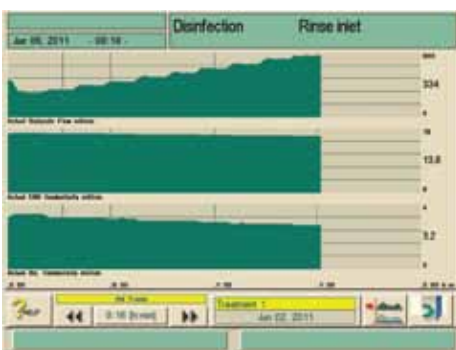
Auto On and Off feature. Dialog+ can be programmed to automatically start in the morning and turn off at the end of the day.



Event Timer – an individualized event, such as a time to give patient medication, can be programmed during treatment to sound an alarm.



Disinfection log maintains a detailed history of last disinfection cycles.



On-line Trending Graphs provide operators and technicians with historic information on treatment parameters.

For more information, contact a B. Braun Renal Therapies Division representative at **1-800-848-2066**, or email us at rt.d.us@bbraun.com.

