

# Outlook<sup>®</sup> 300 Safety Infusion System

For Advanced Infusion Therapy  
Safety and Efficiency



Improve safety, efficiency and workflow across  
departments with wireless access to infusion data.

B. Connected.

**B | BRAUN**  
SHARING EXPERTISE

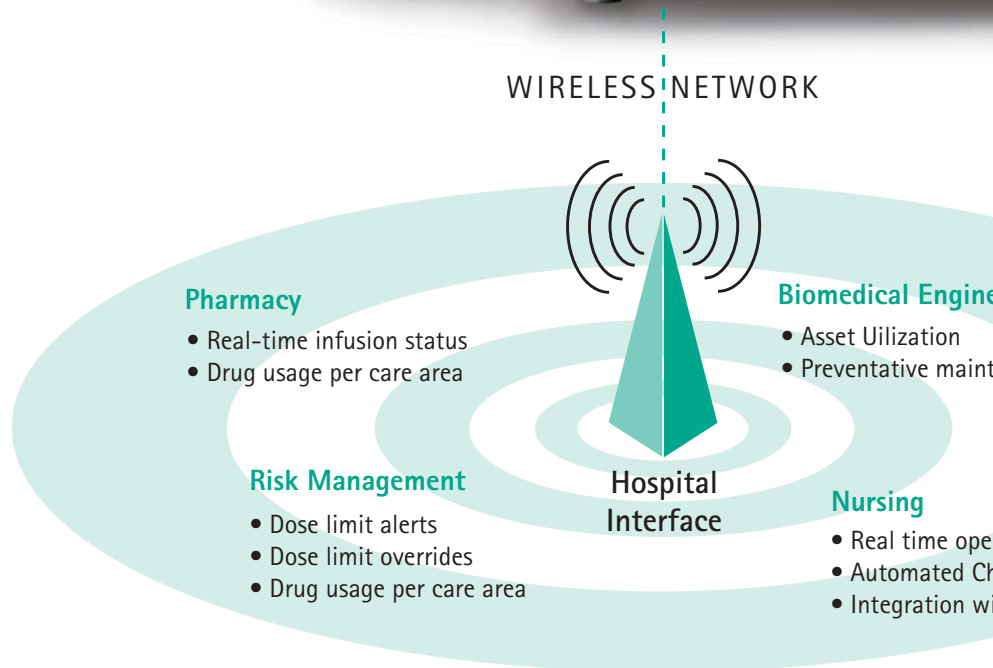


"The ability to access real-time infusion data helps improve safety and alerts us to potential IV medication errors before they happen."



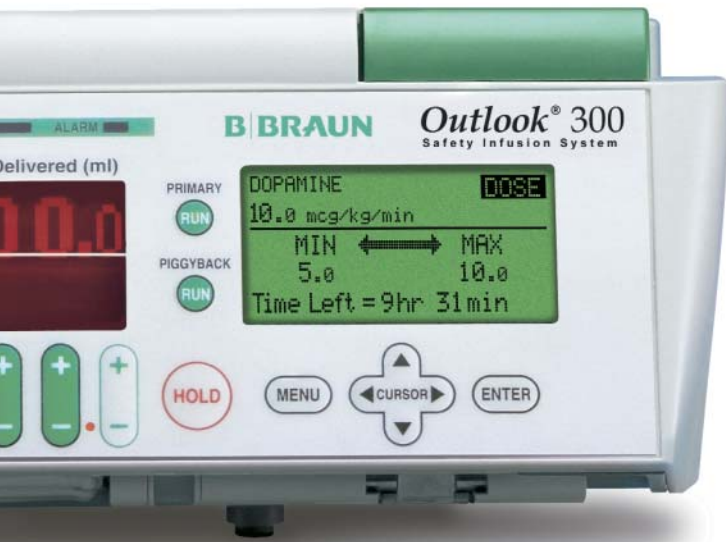
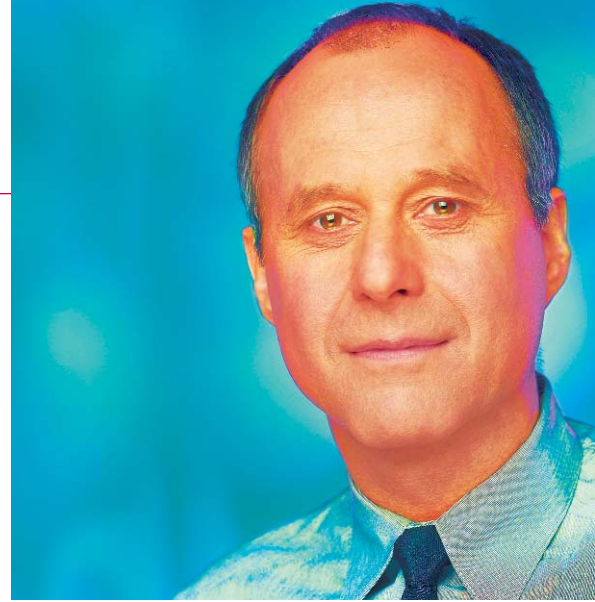
### Improve your ability to monitor safe medication practices

- Improve department efficiency by identifying trends in medication delivery and usage
- Access a real-time view of IV therapy progress for continuous maintenance
- Capture the cost of "lost" doses with an audit that can close the billing loop



# B. Innovative.

"A new technology needs to be easy to implement. But when it improves the safety and overall efficiency of operations, multiple departments gain."



### Leverage real-time data collected at the point of care for easy use by multiple departments

- Easy integration with existing hospital information systems via open architecture
- Utilizes industry standard 802.11b wireless protocol
- Minimize network traffic and enable easy translation with ASCII data string
- Enable authorized users to access real-time infusion data – from a PDA, at the nursing station, in the pharmacy, or at the pump
- Eliminate the need for externally mounted interface with built-in wireless radio

"Real-time access to infusion status is important to me, especially if it helps me address patient and clinician safety proactively."

### Improve the quality, safety and efficiency of patient care, without impacting clinical workflow, using wireless communication

- Immediate access to DoseGuard™ dose limit data for continuous safety improvement
- Track medication delivery trends to identify clinical support and training needs
- At-a-glance visualization of vital information concerning patient's IV therapy
- Focus more time on patient care with automated charting



Monitoring

Maintenance scheduling

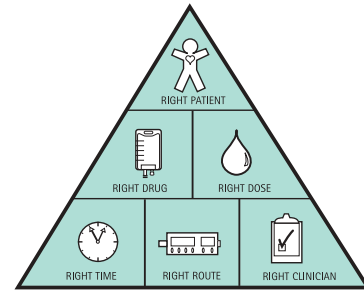
Integration/alarm display  
Charting  
Integration with nurse call system

# Outlook® 300 Safety Infusion System

## SPECIFICATIONS

Mechanism:	Volumetric, Positive Pressure Displacement Reservoir
Width:	30.5 cm (12 in)
Height:	11.4 cm (4.5 in)
Depth:	22.2 cm (8.75 in)
Weight:	5 kg (11 lbs)
Power:	120 VAC, 3A, 60 Hz USA excluding accessories
Grounding Resistance:	Meets UL Standard 2601-1
Leakage current:	Meets or Exceeds UL Standard 2601-1
Battery:	12 V sealed lead-acid battery
Battery Operating Time:	2.5 hours ± 30 min. at 125 mL/hr
Rate Range:	0.1 to 999.9 mL/hr in 0.1 mL increments Micro Mode: 0.1 to 99.9 mL/hr in 0.1 mL increments
Volume to be Infused Range:	0.1 to 9999.9 mL in 0.1 mL increments
Variable Occlusion Pressure:	75, 100, 200, 300, 400, 500, and 750 mmHg
KVO Rate:	3 mL/hr or selected rate whichever is lower
Volumetric Accuracy:	± 5%
Alarms:	Air-in-Line, Bag Empty, Door Open, Downstream Occlusion, Hold time Exceeded, Low Battery, Plug-in, System Error, Upstream Occlusion, Check Set, DoseGuard™ Alert
Memory:	Permanent data retention after the pump is turned off unless alternative Data Retention Defaults have been selected in the Biomed Options
Tubing:	Horizon® Pump Sets
Modes/Features:	DoseScan™ Dose Mode with Drug Menu and DoseGuard™ dose limits, Primary and Piggyback Modes, Set Time and Volume, Schedule Next Run, Profile Mode for TPN, Program Mode, q(x) Mode, Site Trend, Variable Occlusion Pressure, Micro Mode, Epidural Mode
Laser:	Class 2 Per IEC 60825-1*
Wireless Radio:	2.4 GHz, 802.11b

\*Applies to laser barcode scanner.



### Promote Safe IV Medication Delivery.

Preventing medication errors begins with confirming the right patient with the right drug and the right dose along with the right route, the right time, and the right clinician.



Extend your Outlook on Safety.

Schedule a consultation with a  
B. Braun Infusion Specialist by calling  
**1-800-227-2862.**

B. Safe.

**B | BRAUN**  
SHARING EXPERTISE

[www.bbraunusa.com](http://www.bbraunusa.com)