

Contiplex[®] Echo

Styleted Echogenic CPNB Catheter System



Designed with echogenicity in mind.

Contiplex® Echo

Echogenic Catheter and Needle System for CPNB

Styleted Threadability

Help ensure control while threading

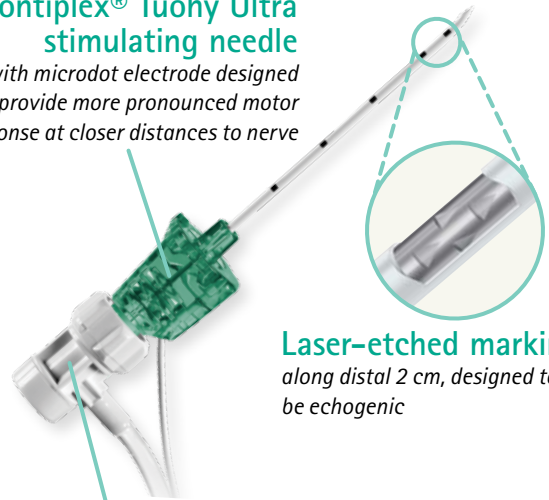


Flat Coil Technology

Entire catheter length constructed with flat metal coils designed to be echogenic

Contiplex® Tuohy Ultra stimulating needle

with microdot electrode designed to provide more pronounced motor response at closer distances to nerve



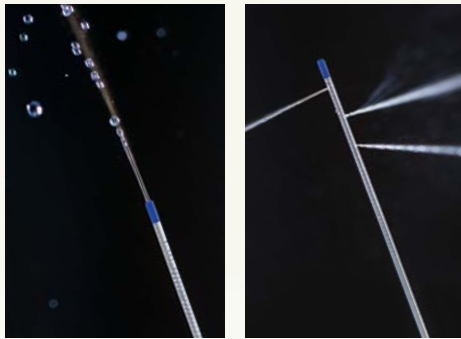
Laser-etched markings along distal 2 cm, designed to be echogenic

Patented Sideport Valve

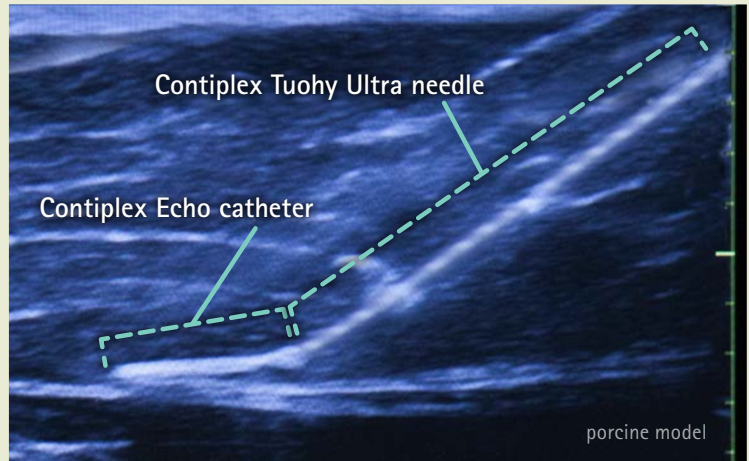
Inject, hydrodissect and aspirate with no need to disconnect before threading catheter

Your Choice

Available in open-tip or closed-tip configurations



Echogenicity in mind.



Standard Configurations*

Item Number	Contiplex Tuohy Ultra Needle	Contiplex Echo Catheter
331761	18G x 2"	Closed Tip
331763	18G X 4"	Closed Tip
331764	18G x 2"	Open Tip
331762	18G x 4"	Open Tip

Above sets include: Contiplex® Echo catheter, Contiplex® Tuohy Ultra needle, sideport valve and catheter connector.

Support Tray

332103	NB400 support tray with transducer cover, ultrasound gel, tinted ChloroPrep®, ultrasound drape with 6" x 4" fenestration, fixation, and other procedural components
--------	---

*Contiplex Echo catheters also available through B. Braun CustomPlus™ Custom Tray Program.

Schedule a demo today.

Call your B. Braun Representative at 1-800-227-2862.

www.bbraunusa.com

B | BRAUN
SHARING EXPERTISE