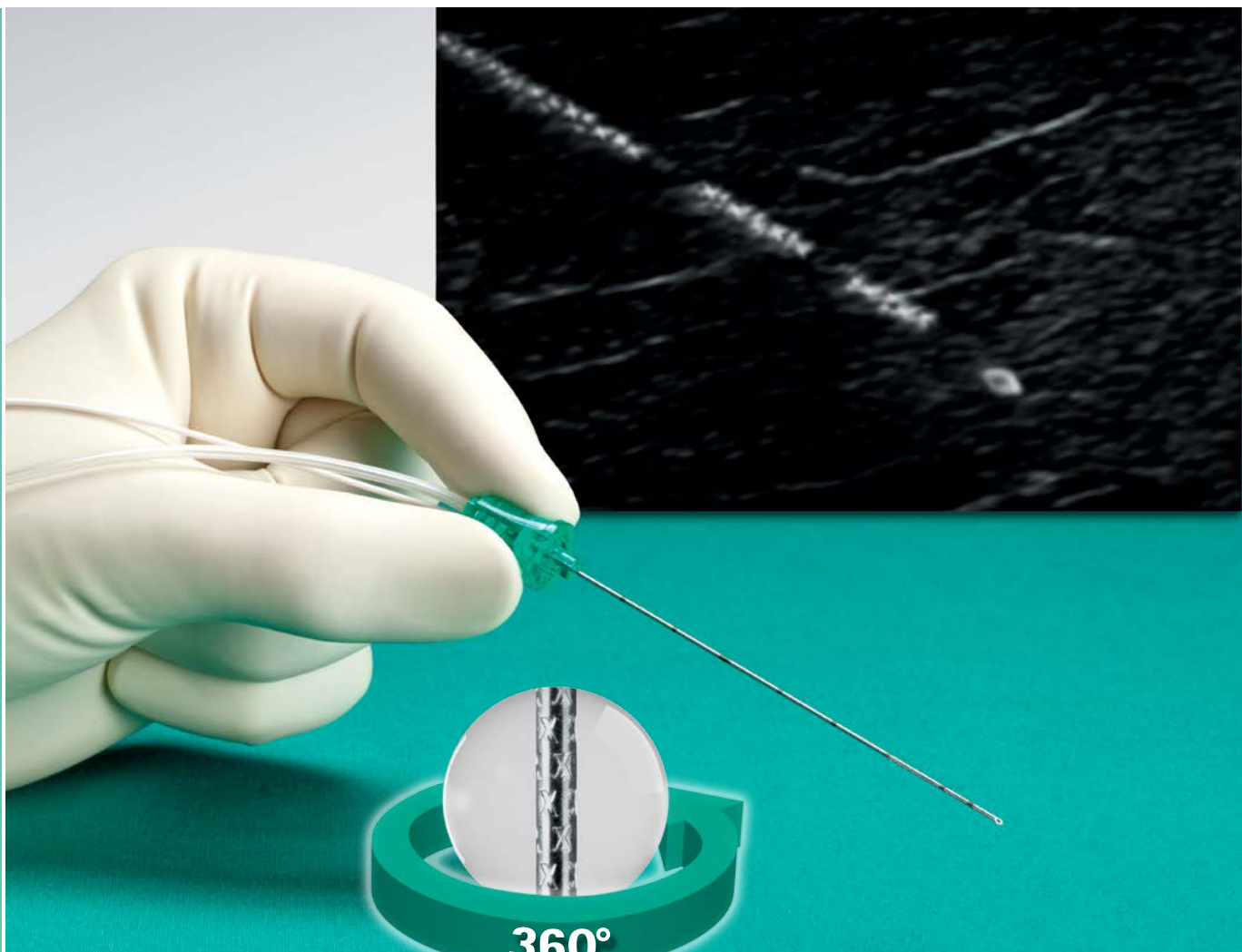


Stimuplex® Ultra 360™

Echogenic Stimulating Peripheral Nerve Block Needles

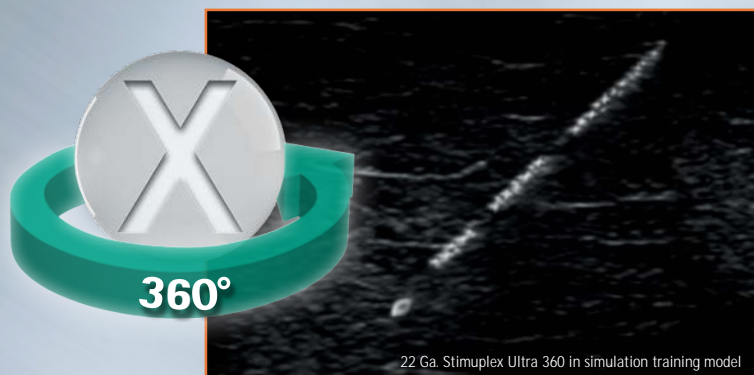


The neXt generation

B|BRAUN
SHARING EXPERTISE

Visibility without Compromise

Stimuplex® Ultra 360™ needles feature B. Braun's new echogenic 360° X-pattern. The 'X' is a unique shape, which when combined with a clear coating, reflects more ultrasound waves back to the probe than previous designs.¹ These needles are designed to provide visibility without compromising puncture characteristics, featuring the same 30° bevel found on other market-leading² Stimuplex needles.



Design Benefits:

- Better Echogenicity – New X-pattern and clear coating results in better ultrasound visualization and tip identification¹
- 360° Visibility – 360° markings designed for ultrasound visibility from all sides
- Designed for Consistent Puncture – Same 30° back-cut bevel as current Stimuplex needles

Stimuplex® Ultra 360™

Individual Needles • 25 units per case

Size	Order code
22 Ga. x 1 3/8" (35 mm)	333640
22 Ga. x 2" (50 mm)	333642
22 Ga. x 3 1/8" (80 mm)	333644
20 Ga. x 4" (100 mm)	333648
20 Ga. x 6" (150 mm)	333646

Procedural Trays • 10 units per case

Includes sterile ultrasound probe cover and gel, tinted Chloraprep® and other procedural components

with Stimuplex Ultra 360 22 Ga. x 2" needle	332135
with Stimuplex Ultra 360 20 Ga. x 4" needle	332137



To learn more, contact your local B. Braun representative and visit www.BBraunUSA.com/SU360
1-800-227-2862

B | BRAUN
SHARING EXPERTISE

www.BBraunUSA.com

1. Internal testing: ETRs JMLY-8ADPR2, NPAK-9VRK2K
2. IMS Data, Q4 2014

Rx Only. ©2015 B. Braun Medical Inc., Bethlehem, PA. All Rights Reserved. PC6-21_8/15_KE
Chloraprep is a registered trademark of CareFusion Corporation