



## B. Braun Medical Renal Therapies Quarterly Newsletter

---

### Dialog+® Improvement

Dialog+ hemodialysis machines will include some minor improvements. There are no changes to the Dialog+ IFU:



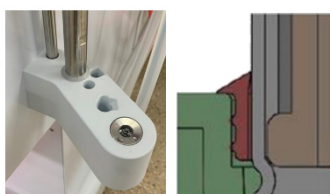
New LED light in the Safety Air Detector



New reset alarm design



New main switch design, that is labelled on/off




New seal around pole on Solcart® holder

Other improvements include a new temperature sensor housing, new motor driver for the heparin pump, and modification to the rear door wiring harness.




## Service Portal: Gone Global

Currently, technicians are only able to see US documents in the service portal. In upcoming weeks, the service portal will be transitioned to a global format. You will need to click “English” in the language drop down as you search for documents.

DOCUMENTS ( 4 )



The screenshot shows the Service Portal interface. At the top, there are filters for 'Service Manual', 'All Publication Channels', and 'All Country Releases'. A language dropdown menu is open, showing options for 'All Languages', 'German', 'English' (highlighted), and 'Spanish'. Below the filters is a table of documents.

Title	Size	Version	State	Date	Language	Actions
 SM Dialog+ SW 9.xx Rev. 1.00.03 EN 2020-02 Service Manual Dialog+ SW 9.xx Rev. 1.00.03 EN 2020-02	51.7 MB			03.04.2020	EN	★ ...
 SM Dialog+ SW 9.xx Execution Protocol Rev.1.00.03 EN 2020-02 Execution Protocol Dialog+ SW 9.xx Rev.1.00.03 EN 2020-02	121.0 KB			03.04.2020	EN	★ ...
 SM Dialog+ SW 9.xx Commissioning Check List Rev. 1.00.03 EN 2020-02 Commissioning Check List Dialog+ SW 9.xx Rev. 1.00.03 EN 2020-02	155.4 KB			03.04.2020	EN	★ ...

## COVID Testing for Classes

Any participant attending any of the upcoming Dialog+ or Aquaboss technical training classes will be required to get tested regardless of the state they live in. The test results will need to be completed within 3 days from attending the class. Proof of negative test results will need to be provided.

## Website Reminder

- **JIRA** – contact our technical support and see other questions previously asked from members of your company
- **LMS** – access presentations and instructional videos
- **Register for Classes** – view the remaining classes available for 2020 and the new class format details
- **Service Portal** – access technical documents

[Learn More](#)

Need your password reset? Contact technical support for a reset.

---

## Customer Service Holidays

The B. Braun Renal Therapies customer service team will be out of the office and unavailable to take orders through the phone on November 26-27, December 24-25, and December 31-January 1.

---

*Have colleagues that need to subscribe to the bulletin?  
Subscribe at [bbraunusa.com/renalbulletin](https://bbraunusa.com/renalbulletin).*

---

*Copyright © 2020 B. Braun Medical Inc., All rights reserved.*

**Our mailing address is:**

824 12th Avenue  
Bethlehem, PA 18018

Want to change how you receive these emails?  
You can [update your preferences](#) or [unsubscribe from this list](#).