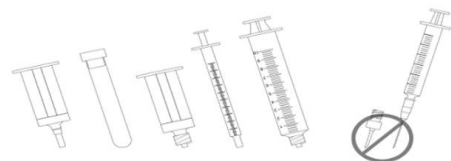


Drawing Labs from LockSite® Needleless Access Site

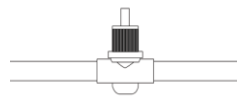
Note: The information presented in this guide is not intended to replace the instructions for use for the Dialog+ hemodialysis system, the instructions for use for the Streamline bloodlines and/or an institution's policies and procedures.

1. LockSite needleless access sites are only for use with syringes and other devices with a male luer connector.



Warning: Do not use sharp needles, Medic or other safety needle devices with LockSite Needleless Access Site. Use of such devices will cause LockSite to leak or result in an air embolus in fluid pathway.

2. The Sterility protector cap keeps LockSite sterile for first use. Remove cap, but do NOT discard.



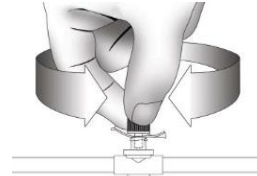
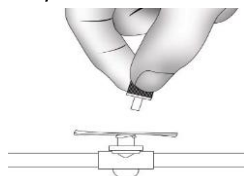
3. If using syringe insert male luer into LockSite and turn to the right, then pull back the desired amount of blood, turn left and remove syringe.



4. If using a vacutainer, place male portion of vacutainer into LockSite. Turn vacutainer to the right and place blood collection tube inside vacutainer to obtain blood sample. Remove blood collection tube and turn vacutainer to the left to remove.

5. For subsequent use, disinfect LockSite by laying an alcohol swab over the female luer opening. Insert the cap probe into LockSite socket, pushing alcohol swab down firmly into LockSite's socket.

6. Press firmly and rotate to assist entry of probe into socket for alcohol disinfection.



7. Disinfection increases with time. The longer the probe and swab are in place, the greater the disinfection rate. Disinfect LockSite socket at least 30 seconds prior to use.

Refer to product labeling for use for complete instructions for use.