

# Stimuplex® HNS12 with SENSE

(Sequential Electrical Nerve Stimulation)

Get the twitch sooner. Maintain it longer.



A dramatic step forward in nerve stimulation and acquisition.

# B. Confident.

# Help locate nerves faster and easier with SENSE Technology.

## What is SENSE?

Until now, practitioners were accustomed to losing motor response due to small or inadvertent needle movements.

Most traditional nerve stimulators emit two very short pulses every second. That's because short pulses improve accuracy or specificity when closer to the nerve. The downside is that sensitivity, or the availability to elicit visual feedback at a distance from the nerve, is lost.

SENSe (Sequential Electrical Nerve Stimulation) technology increases both sensitivity and specificity by adding a third, longer pulse. This acts like a homing signal to elicit a motor response even when the needle is far from or not aimed directly at the nerve.



## Why switch to SENSE?

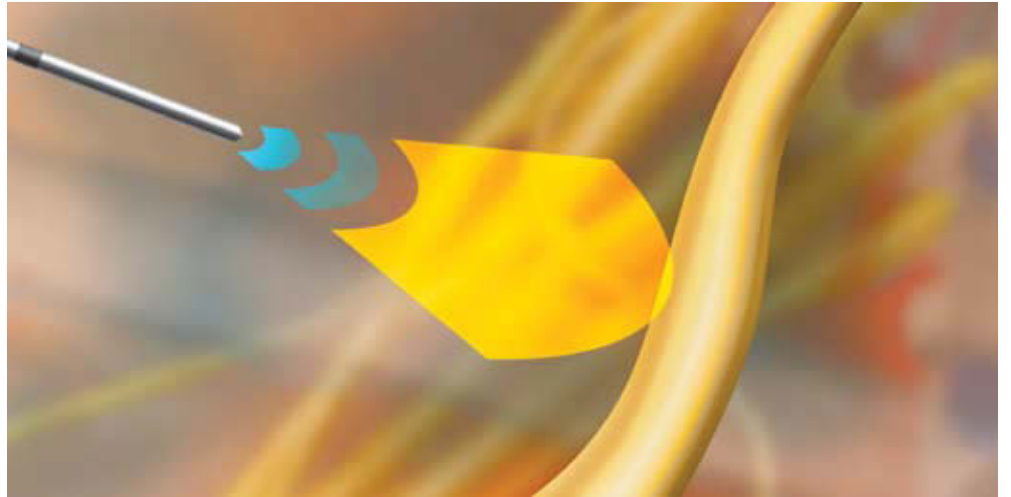
- Get the first twitch sooner for faster visual feedback.
- Make more informed decisions on needle movement through increased and varied visual feedback without the loss of twitch.
- Less necessity to adjust amperage control.
- Using SENSE is easy. Simply press the Hz button to activate SENSE.
- No need to change your technique.



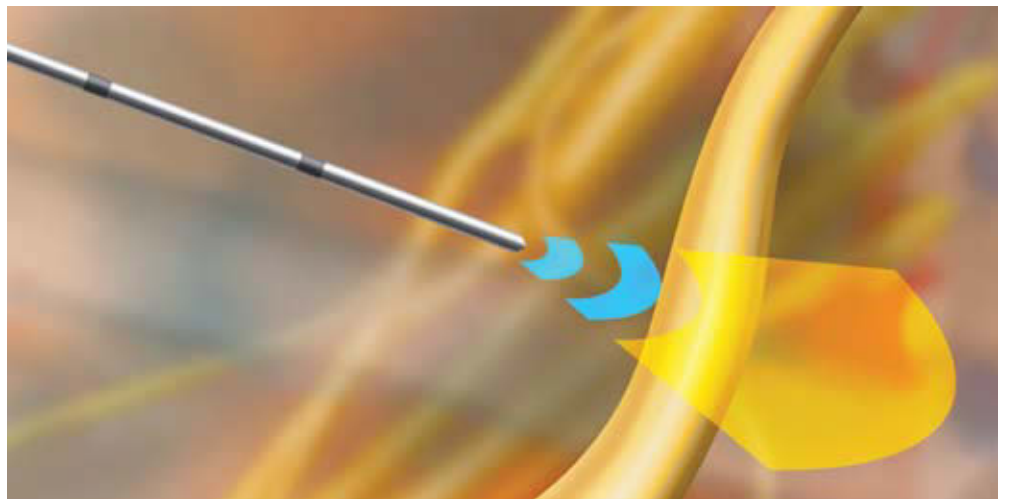
SENSe technology works exclusively on the Stimuplex® HNS12 Nerve Stimulator

## How does it work?

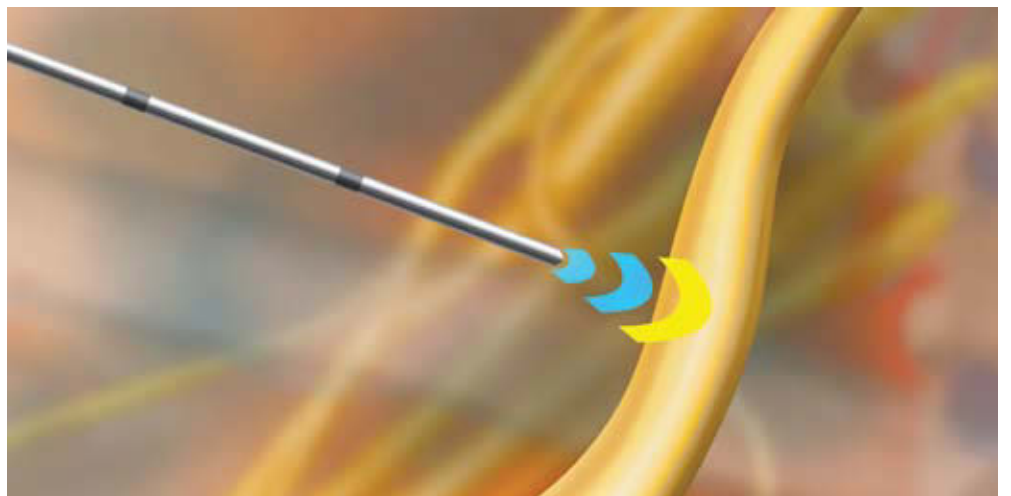
As you advance the needle, SENSE generates two short and one long pulse. The longer pulse elicits a motor response even when the needle is far from or not aimed directly at the nerve. As a result, you will see one twitch every second.



As the needle advances closer, the smaller pulses also reach the nerve, which enables you to see three twitches every second.



Reducing the current of the stimulator during needle advancement automatically decreases the length of the longer pulse. Shorter pulse durations are more effective in helping to pinpoint the final position of the needle tip.



If you lose the twitch altogether, the longer pulse duration can help you find it again without having to increase the current!

# Optimize your peripheral nerve block procedures:

## Stimuplex Pen

- Locate superficial nerves non-invasively by applying stimulating current through the skin.
- Help find the exact nerve location and angle of entry before introducing the block needle.



## Ordering Information

Description	Product Code	Reorder #
Stimuplex HNS12 Peripheral Nerve Stimulator	HNS12	4892098
Remote Control for HNS12	RC300	333559
Replacement Electrode Cable	HEC	333576
Stimuplex Pen (for use with Stimuplex HNS11 and HNS12 Nerve Stimulators)	STIMPEN	333544

### Schedule a demo today.

Call your B. Braun Representative at **1-800-227-2862** or visit us at **[www.bbraunsense.com](http://www.bbraunsense.com)**

### Sharing Expertise®

It's more than a philosophy.

It's our promise to the healthcare community and ourselves to continuously seek knowledge. To expand it. To apply it. To share it. All to help improve and save lives.

This is Sharing Expertise.  
This is B. Braun.

**B | BRAUN**  
SHARING EXPERTISE

[www.bbraunusa.com](http://www.bbraunusa.com)