

# Ultraline

Peripheral nerve block products designed for enhanced echogenicity



## Ultraline Family of Products

- Stimuplex® Ultra
- Ultraplex
- Contiplex® Tuohy Ultra

# Improved Echogenicity for Steeper Blocks

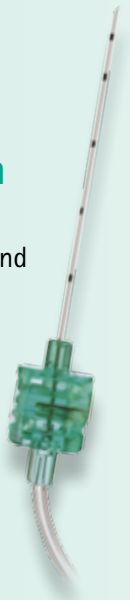
Ultraline is B. Braun's family of products designed for blocks at steeper angles where needle visualization may be more challenging, and to help those beginning ultrasound-guided Regional Anesthesia.

Ultraline features markings designed to enhance ultrasound visualization while maintaining the smooth gliding characteristics of our standard needles.



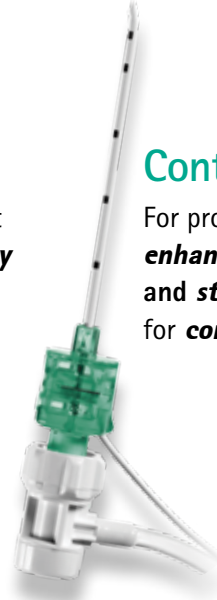
## Stimuplex® Ultra

For providers that want **enhanced echogenicity** and **stimulation capability** for **single shot** PNB



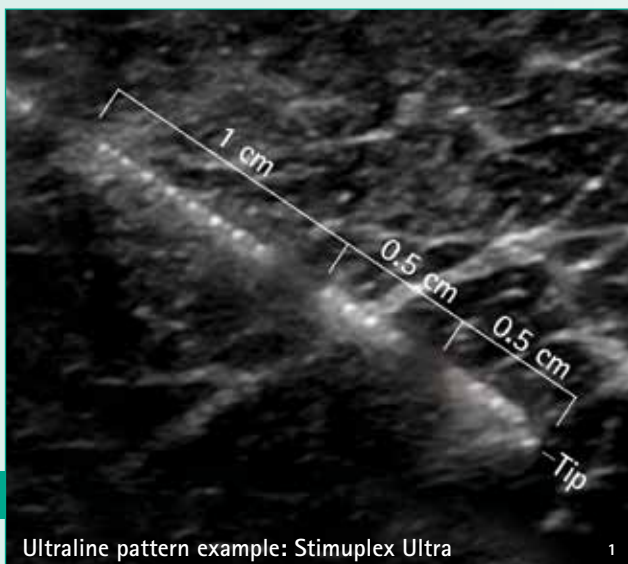
## Ultraplex

For providers that want **enhanced echogenicity** **without stimulation** for **single shot** PNB



## Contiplex® Tuohy Ultra

For providers that want **enhanced needle echogenicity** and **stimulation capability** for **continuous** PNB



Ultraline pattern example: Stimuplex Ultra

1

## Ultraline Design Advantages

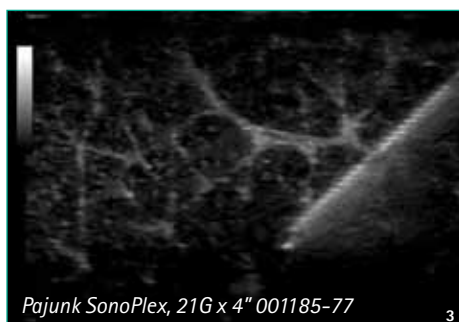
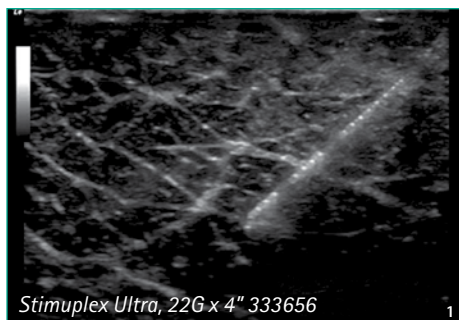
- Help differentiate needle shaft from tip at steeper angles
- Designed to reduce acoustic shadowing under the needle
- Consistent echogenic pattern with markings on top and bottom of needle

# Echogenicity Without Compromise

## See the benefits...

### Crisper needle image with fewer artifacts

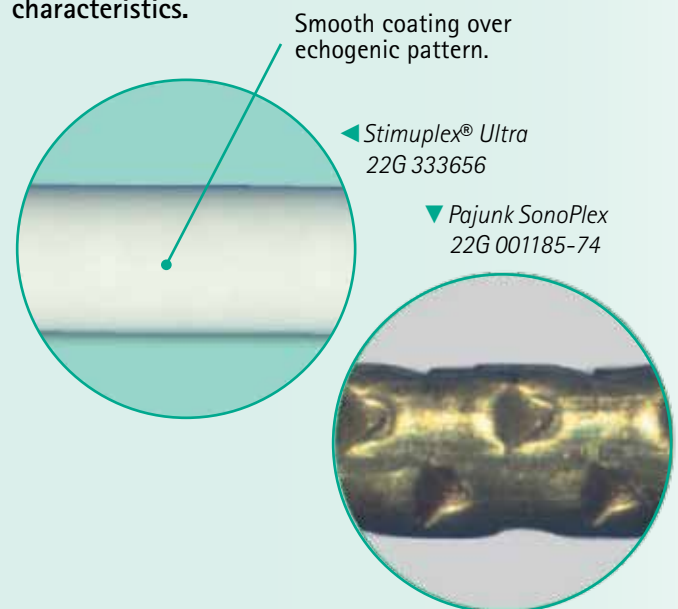
"Acoustic shadowing is of special clinical interest: especially in the longitudinal view, shadowing can extinguish important aspects of the scan and therefore decrease the safety of the puncture process".<sup>2</sup> Laser etching design produces a crisper image to help reduce ambiguity.



## ...While maintaining consistent needle feel

### Reduced impact on feel and handling

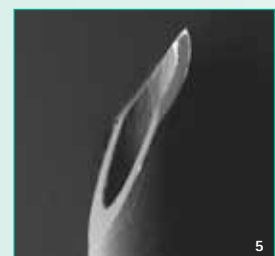
Our unique etching and coating process is designed to reduce impact on puncture force and gliding characteristics.



### Bevel under electron microscope



Stimuplex Ultra  
30° Short Bevel



Pajunk SonoPlex  
Facet Tip

**80%** of clinicians use B. Braun's standard PNB needle, Stimuplex® A, in their daily practice<sup>6</sup>. With Stimuplex Ultra, we used the same feel, handling, and performance as Stimuplex A and added echogenicity.

# Ultraline

## Stimuplex® Ultra and Ultraplex Design Advantages:

- Improved ultrasound visibility at steeper angles
- No loss in the market-proven needle feel and tactile feedback<sup>7</sup>
- Short bevel needles (30° - 45°) carry less risk of causing nerve injuries<sup>8</sup>



### Stimuplex Ultra

- **Stimulation capability**
- Etched markings designed for enhanced echogenicity
- 30°, short bevel consistent with B. Braun's Stimuplex A
- Needle sizes: 22G - 1<sup>3</sup>/<sub>8</sub>", 2", 3<sup>1</sup>/<sub>8</sub>", 4"  
20G - 6"



### Ultraplex

- **No Stimulation capability**
- Etched markings designed for enhanced echogenicity
- 30°, short bevel consistent with B. Braun's Stimuplex A
- Needle sizes: 22G - 1<sup>3</sup>/<sub>8</sub>", 2", 3<sup>1</sup>/<sub>8</sub>"  
20G - 4", 6"



## Contiplex® Tuohy Ultra Design Advantages:

- Improved ultrasound visibility at steeper angles
- Preload catheter into sideport to reduce procedural steps and eliminate need to disconnect
- Microdot electrode designed to provide more pronounced motor response at closer distance to nerve



Contiplex Tuohy Ultra Set



### Contiplex Tuohy Ultra

- Stimulating needle – Micro-dot stimulation electrode at needle tip
- Etched markings designed for enhanced echogenicity
- Tuohy bevel consistent with B. Braun's Contiplex Tuohy
- Unique sideport valve – inject/aspirate then thread catheter without need to disconnect or move needle
- Needle sizes: 18G - 2", 4", 6"
- Closed tip 20G x 39" Polyamide Nylon catheter



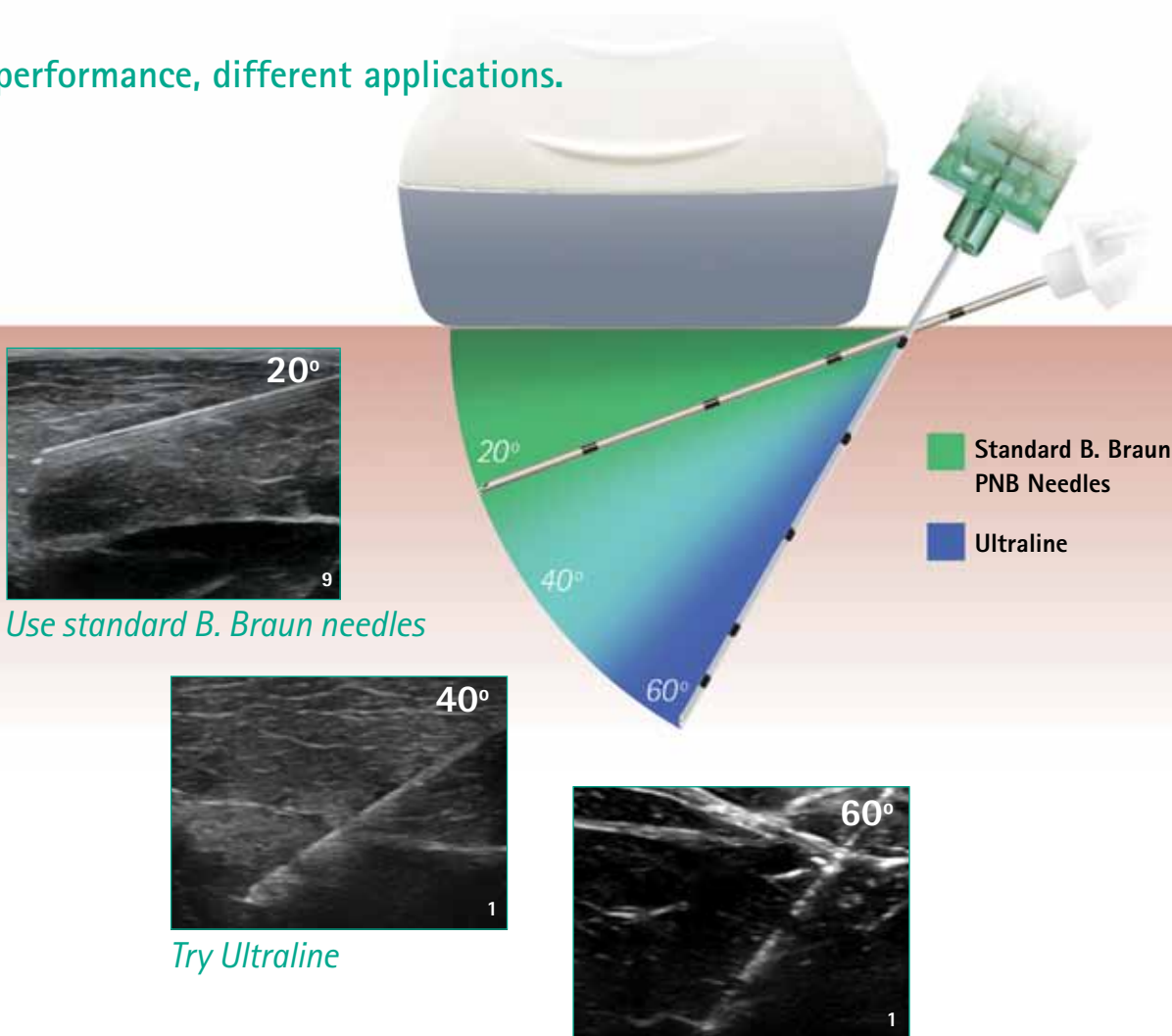
# Do I need Ultraline?

Deciding whether to use a needle designed for enhanced echogenicity depends upon a number of factors:

- Depth and angle of needle relative to ultrasound probe
- Type and capabilities of ultrasound machine and probe
- Patient anatomy

Regardless of your choice, B. Braun has products to fit your procedural needs.

Same great performance, different applications.



## References:

1. Stimplex Ultra 4" 22G, 333656, animal model
2. Ultrasound Characteristics of Needles for Regional Anesthesia. *Reg Anesth Pain Med* 2007;32:440-447.
3. Pajunk SonoPlex 4" 21G, 001185-77, animal model
4. "Stimplex Ultra" electron microscope image form Uni. of Hanover, B. Braun item #333656
5. "SonoPlex" electron microscope image from Uni. of Hanover, Pajunk SonoPlex item #001185-77
6. IMS data, Q1 2009-Q1 2010
7. A. Sardesai, N. Denny, M. Herrick, A. Lynch, A. W. Harrop-Griffiths, "A study of the characteristics of single-injection insulated block needles in a biologic model." *RAPM* Vol. 29 No. 5, (Sept- Oct, 2004.)
8. Admir Hadzic, *Peripheral Nerve Blocks: Principles and practices*. 2004. The McGraw-Hill Companies, Inc.
9. Stimplex A 2" 22G, 4894502, animal model

Visibility of the needle may depend on a number of factors such as proper setting of the ultrasound unit, patient related conditions of the tissue, artifacts, proper alignment of the ultrasound probe, the needle insertion angle, and the needle depth.

# Ordering Information

## Ultraline with echogenic markings

### Stimulating Single Shot

#### Stimuplex® Ultra with 30° bevel 25 units per case

Length	Gauge	Order code
1 3/8 in. (35 mm)	22	333650
2 in. (50 mm)	22	333652
3 1/8 in. (80 mm)	22	333654
4 in. (100 mm)	22	333656
6 in. (150 mm)	20	333660

## Standard B. Braun PNB Needles without echogenic markings

#### Stimuplex A with 30° bevel 25 units per case

Length	Gauge	Order code
1 in. (25 mm)	24	4894251
1 in. (25 mm)	22	4894539
1 3/8 in. (35 mm)	22	4894367
2 in. (50 mm)	22	4894502
4 in. (150 mm)	21	4894260
6 in. (150 mm)	20	4894278

### Non-Stimulating Single Shot

#### Ultraplex with 30° bevel 25 units per case

Length	Gauge	Order code
1 3/8 in. (35 mm)	22	333662
2 in. (50 mm)	22	333664
3 1/8 in. (80 mm)	22	333666
4 in. (100 mm)	20	333668
6 in. (150 mm)	20	333669

#### Plexufix® with 30° or 45° bevel 25 units per case

Length	Bevel	Gauge	Order code
1 in. (25 mm)	30°	24	332001
1 in. (25 mm)	30°	22	332017
1 1/2 in. (40 mm)	45°	22	332015
2 in. (50 mm)	30°	24	332000
2 in. (50 mm)	30°	22	332010

### Continuous

#### Contiplex® Tuohy Ultra Sets stimulating needle with Tuohy bevel 12 units per case

Length	Gauge	Order code
2 in. (50 mm)	18	331673
4 in. (100 mm)	18	331674
6 in. (150 mm)	18	331676

*Contiplex Tuohy Ultra Sets Contain:*

- Contiplex Tuohy Ultra Needle
- Sideport Valve Assembly with Extension Tubing
- 20 Ga. x 39 in. (100 cm) Polyamide Nylon Catheter with Closed Tip
- Catheter Connector
- Threading Assist Guide

#### Contiplex Tuohy Sets stimulating needle with Tuohy bevel 12 units per case

Length	Gauge	Order code
1 1/2 in. (40 mm)	18	331695
2 in. (50 mm)	18	331691
4 in. (100 mm)	18	331693
6 in. (150 mm)	18	331694

*Contiplex Tuohy Sets Contain:*

- Contiplex Tuohy Needle
- Sideport Valve Assembly with Extension Tubing
- 20 Ga. x 39 in. (100 cm) Polyamide Nylon Catheter with Closed Tip
- Catheter Connector
- Threading Assist Guide

Contact your B. Braun representative to help decide what's right for your practice.

Call 1-800-227-2862  
www.stimuplexultra.com

# Help improve your needle visualization and scanning technique.

## Techniques



### Push.

*Is your needle in plane, but you can't see it well because of a steep angle between the transducer and needle?*

Pushing or rocking the heel or toe of the transducer can help reduce the angle. Remember, the smaller the angle between the transducer and needle, the easier the needle is to visualize.



### Align.

*Have you lost the needle?*

Sliding the transducer from side to side parallel to the needle is the easiest way to relocate it.



### Rotate.

*Are you really looking at the needle tip?*

Rotating the probe left and right slightly can help determine whether the whole needle shaft and tip are in alignment.



### Tilt.

*Want to refine the needle image or scan anatomy in proximity to the needle without moving the probe off the patient?*

Once the needle is located, tilting the probe from side to side can help scan additional anatomy without moving the needle.

## Technology



### Ultraline Needles.

*Is it more difficult to visualize standard needles at steep angles or with deep blocks?*

Ultraline needles feature echogenic marks designed to enhance the needle image at steep angles and during deep blocks.



### Visualization Software.

*Is your ultrasound machine equipped with software designed to enhance needle visualization?*

Many newer machines have this type of software. Try it with standard needles like Stimuplex® A and Contiplex® Tuohy.



Call 1-800-227-2862  
or visit  
[www.stimuplexultra.com](http://www.stimuplexultra.com)  
to request a trial.



**B | BRAUN**  
SHARING EXPERTISE

[www.bbraunusa.com](http://www.bbraunusa.com)