



FROM PAINFUL TO PEACEFUL

Transform the burn care experience with new Prontosan® Wound Gel X

PATIENTS WITH SEVERE BURNS HAVE A LONG ROAD AHEAD

PATIENT 1: MARY*

Gender	Age	Allergies	Location of wound	Wound type
Female	6	None	Back	Superficial and deep partial burn

BURN NOTES:

- Patient tripped and fell into a hot fireplace, resulting in a mix of superficial and deep partial burns
- Patient is young and highly sensitive to pain

MINOR PATIENTS, MAJOR NEEDS

Over 125,000 children under the age of 16 receive medical treatment for burn injuries each year.^{1,2}



PATIENTS LIKE MARY REQUIRE MORE SENSITIVE TREATMENT³

- Fewer dressing changes
- Easy-to-remove dressings
- Techniques that reduce pain

*Hypothetical patient for discussion purposes only.

PATIENT 2: FRANK*

Gender	Age	Allergies	Location of wound	Wound type
Male	38	Sulfa	Arm	Partial- and full-thickness wounds

BURN NOTES:

- Patient is a kitchen restaurant worker—he leaned against a hot oven, giving himself both partial- and full-thickness wounds
- Patient has a known sulfa allergy, dressing choices may be limited
- His burn will require grafting and rehabilitation, potentially lengthening his stay
- Great urgency for him to return home to his family, as he is their primary provider

THE NEED FOR SPEED

Each of the 128 burn centers in the United States² admits an average of 200 patients a year, including those for burn treatment.¹ To handle this high volume, centers must efficiently help these patients heal and transition to the outpatient setting.²



SUBOPTIMAL DRESSINGS CAN BE A BARRIER TO RAPID RECOVERY⁴

- Fail to maintain a moist wound environment
- Fail to protect from secondary infection
- Fail to remove excess exudate
- Fail to separate easily from the wound bed, causing damage on removal

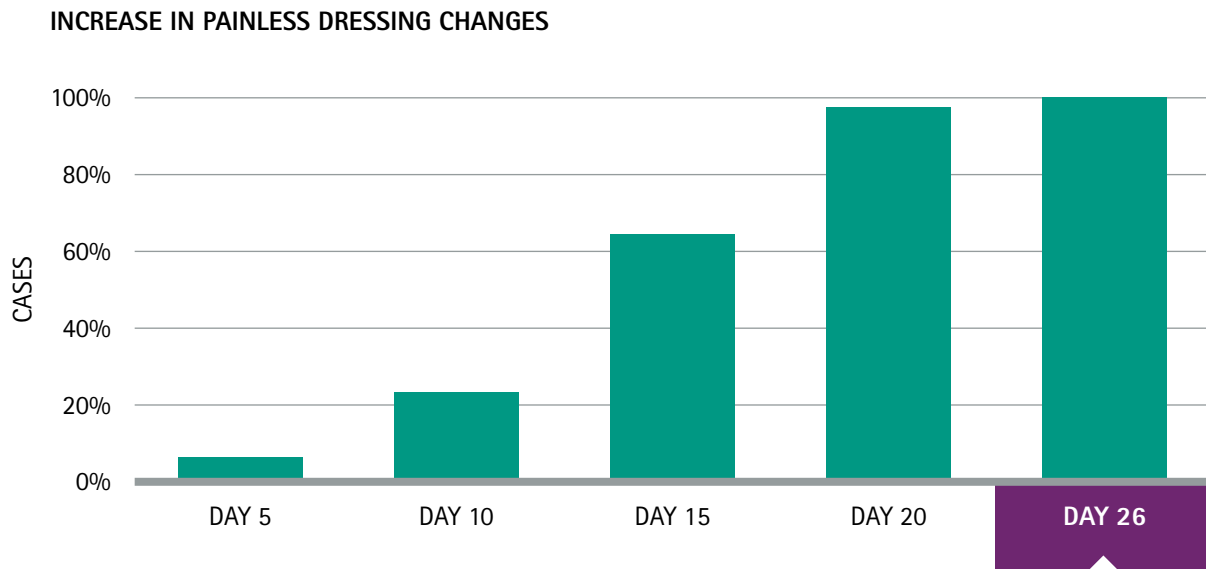
THE HEALING JOURNEY DOESN'T HAVE TO BE SO HARSH.

Offer a gentle healing experience from the start with Prontosan Wound Gel X

REDUCES THE PAIN OF DAILY DRESSING CHANGES⁵

STUDY DESIGN:

Burn Centre of Scientific Emergency Institute Dshanelidze in St. Petersburg, 27 patients.
Treatment of both full- and partial-thickness burns.



100% of patients reported **good comfort** during treatment⁵

HELP YOUR BURN PATIENTS EXPERIENCE A LESS PAINFUL HEALING JOURNEY TO RECOVERY⁵

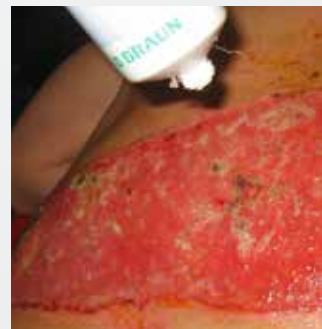
Patient's healing journey*



Day 0



Day 2



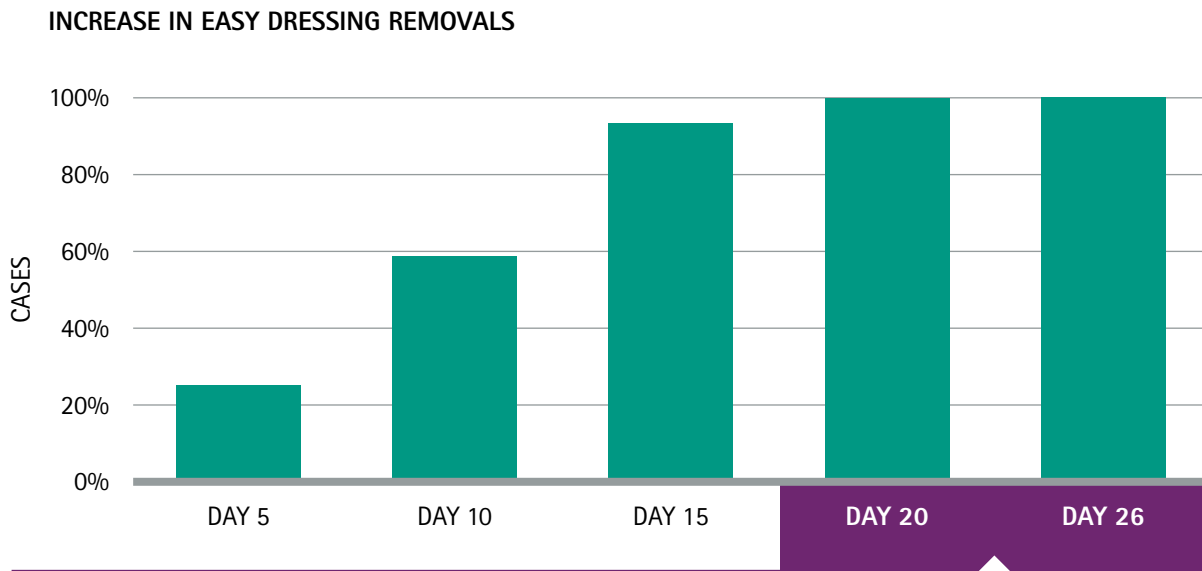
Day 7

*Data on file.

GENTLE DRESSING APPLICATION AND REMOVAL^{5,6}

HIGH VISCOSITY, AQUEOUS GEL

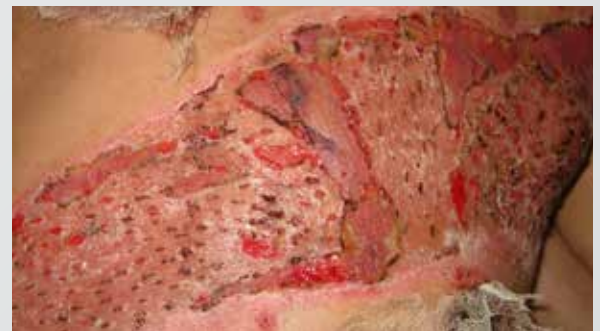
- Adheres to large wound surfaces
- Easily washes off



100% of patients found application easy⁵



Day 14



Day 23

ONCE-DAILY DRESSING CHANGES INCREASE COMFORT ALONG THE WAY

CLEAR GEL LETS YOU VISUALIZE THE WOUND WITHOUT REMOVING THE DRESSING⁶



SUITABLE
FOR ONCE-
DAILY USAGE



COMPATIBLE WITH
MANY SECONDARY
DRESSINGS



ELIMINATES
NEEDLESS DRESSING
CHANGES



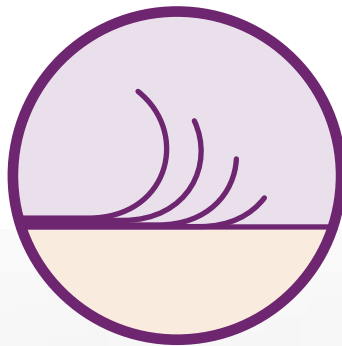
DESIGNED TO KEEP WOUNDS CLEAN AND REDUCE MANUAL DEBRIDEMENT

UNIQUE INGREDIENT: BETAINE—A SURFACTANT⁶

GEL X SUPPORTS AUTOLYTIC DEBRIDEMENT



Promotes removal of dirt and debris



Aids in removal of wound coating



Helps prevent recontamination within the dressing

HELPS AVOID THE PITFALLS OF MANUAL DEBRIDEMENT⁷

Increased costs

Special training and equipment

More frequent dressing changes

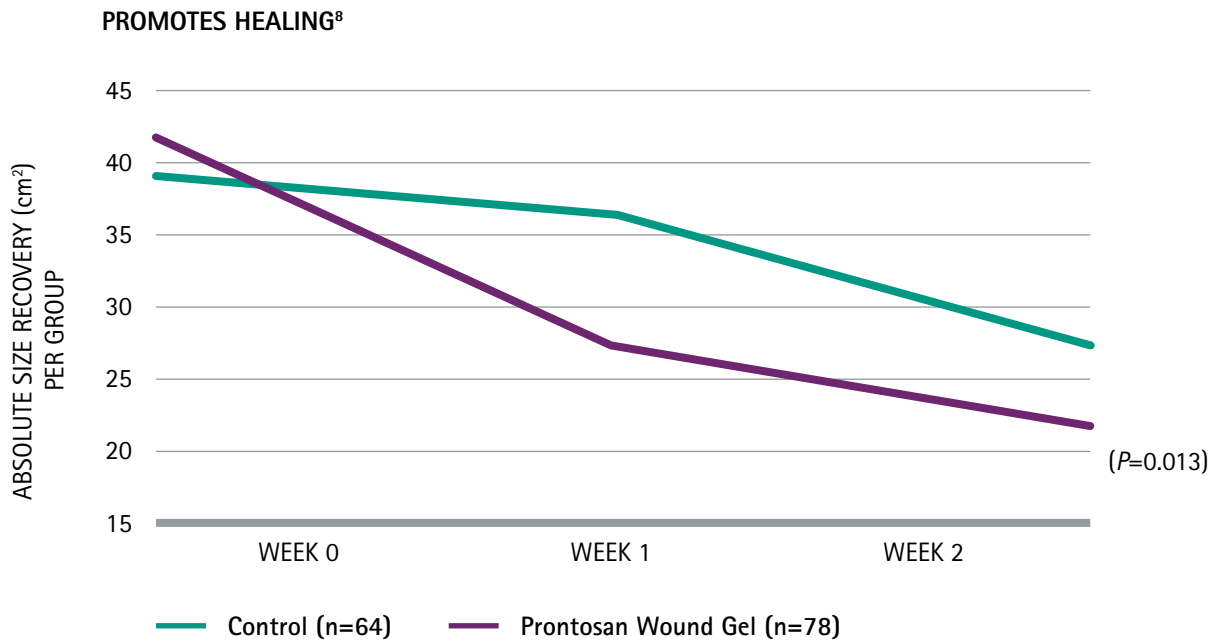
Potential damage to healthy blood vessels, nerves, and tendons

Painful for patient

Use of anesthetic

Increased setup and clean up time

Put patients on the rapid road to recovery with Prontosan Wound Gel



44⁰% reduction in wound size within **2 weeks⁸**

HELP YOUR PATIENTS RECOVER QUICKLY⁵
Patient's healing journey*



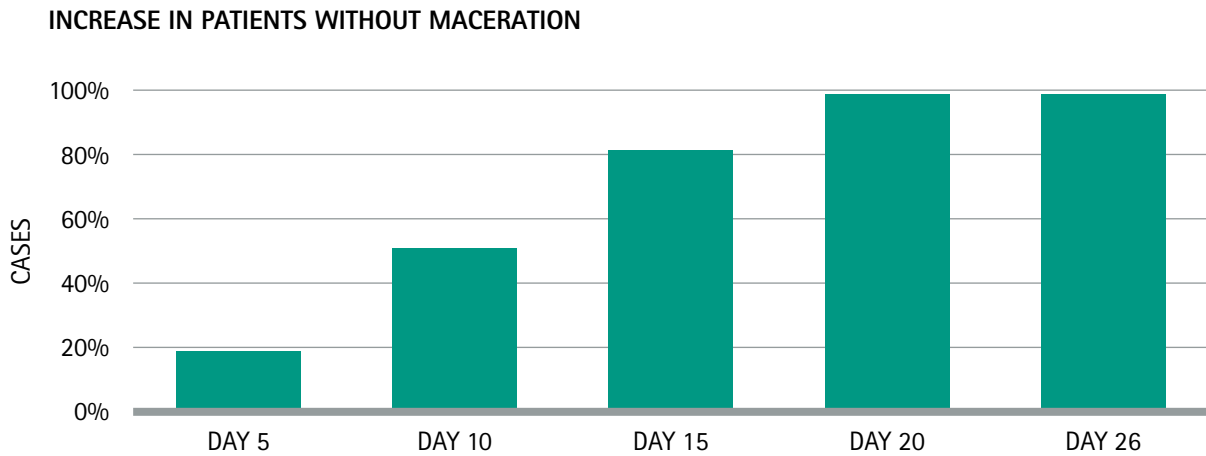
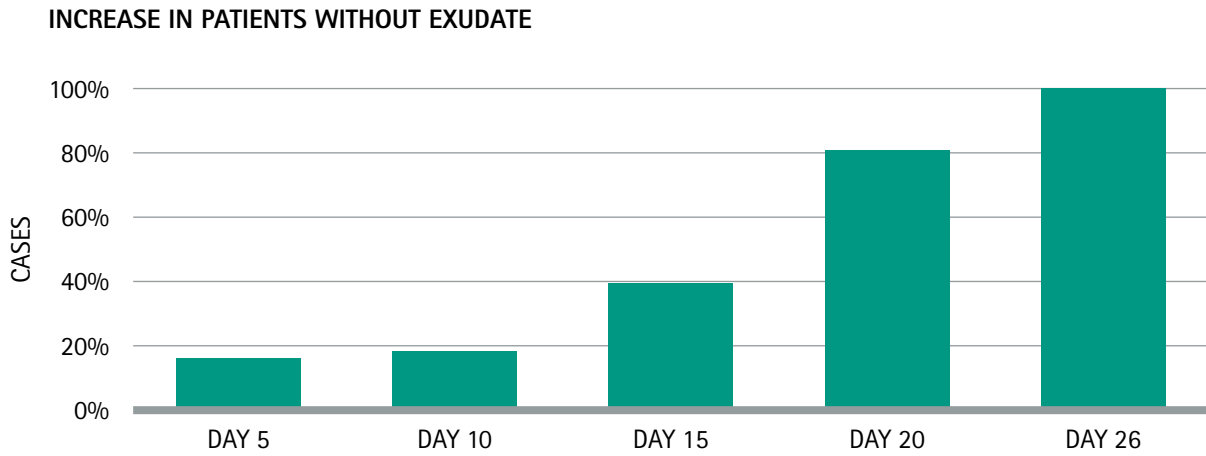
Day 0



Day 3

*Data on file.

SUPPORTS AN IDEAL ENVIRONMENT FOR WOUND HEALING⁵



Day 10



Day 14

PROVEN ROBUST MICROBIAL BARRIER

REDUCES MICROBIAL PENETRATION THROUGH THE DRESSING*

EFFECTIVE MICROBIAL BARRIER AGAINST COMMON BURN UNIT PATHOGENS, INCLUDING:

- Gram- bacteria
- Gram+ bacteria
- Fungi
- Yeast

EXCELLENT SAFETY PROFILE AND LOW ALLERGENIC POTENTIAL^{6,9}

Safe to use in patients with sulfa allergies

INGREDIENT: POLYHEXANIDE (PHMB)⁶

DESTROYS BACTERIA, NOT HUMAN TISSUE

Structurally similar to naturally occurring antimicrobial peptides



SUCCESSFULLY MEETS USP<51> CATEGORY 2 CRITERIA*

INHIBITS GROWTH OF MICROORGANISMS WITHIN THE PRODUCT

The most common pathogens in burn centers are *Staphylococcus* and *Pseudomonas*. Prontosan Wound Gel X addresses both.*

EASING THE JOURNEY FROM HOSPITAL TO HOME

TRANSITIONING PATIENTS TO HOME CARE IS A COMPLEX PROCESS THAT HAS MAJOR RISKS¹⁰

NEEDS

Ensuring patients/caregivers are equipped with the optimal wound care dressing

SUPPORTS PROPER DRESSING APPLICATION

EFFECTIVELY BALANCES MOISTURE

PROMOTES COST-EFFECTIVE CARE AND HEALING

RISKS

Patients/caregivers don't comply with care instructions

INCREASED CHANCE OF INFECTION

DELAYED WOUND HEALING

PROLONGED UNNECESSARY PAIN

Prontosan Wound Gel X is your strategy for maintaining treatment success at home⁶

- ✔ Simple to use
- ✔ Easier dressing change process
- ✔ Confidence in recovery
- ✔ Helps wounds stay clean
- ✔ Robust microbial barrier
- ✔ Facilitates autolytic debridement

YOUR SOLUTION FOR KEEPING PATIENTS ON THE ROAD TO RECOVERY



Ease your patients' burn care journey with Prontosan Wound Gel X

- ✔ Offers a gentle healing experience from the start⁵
- ✔ Puts patients on the rapid road to recovery^{5,8}

The ONLY wound gel with 2 ingredients
—betaine and polyhexanide

Potent microbial barrier creates a
favorable wound healing environment



For more information on Prontosan Wound Gel X
please contact Customer Support: **1-800-227-2862**.
Visit our website at **www.ProntosanWoundCare.com**

References: 1. American Burn Association. Burn Incidence and Treatment in the United States: 2015. http://www.ameriburn.org/resources_factsheet.php. Accessed February 15, 2016. 2. American Burn Association. National Burn Repository 2015 Report. Chicago, IL: American Burn Association; 2015. 3. Selig HF, Lumenta DB, Giretzlehner M, Jeschke MG, Upton D, Kamolz LP. The properties of an "ideal" burn wound dressing—what do we need in daily clinical practice? Results of a worldwide online survey among burn care specialists. *Burns*. 2012; 38(7):960-966. 4. Sussman G. Management of the wound environment with dressings and topical agents. In: Sussman C, Bates-Jensen BM, eds. *Wound Care: A Collaborative Practice Manual*. 4th ed. Baltimore, MD: Lippincott Williams & Wilkins; 2012:502-520. 5. Wound Gel X D0F. Bethlehem, PA: B. Braun; 2014. 6. Bradbury S, Fletcher J. Prontosan Made Easy. *Wounds Int*. 2011;2(2):1-6. 7. Vowden K, Vowden P. Debridement made easy. *Wounds Int*. 2011;7(4):1-4. 8. Valenzuela AR, Peruchio NS. [The effectiveness of a 0.1% polyhexanide gel]. *Rev Enferm*. 2008;31(4):7-12. 9. Prontosan Wound Gel X IFU. Bethlehem, PA: B. Braun. November 2014. 10. Dabiri G, Damstetter E, Phillips T. Choosing a wound dressing based on common wound characteristics. *Adv Wound Care (New Rochelle)*. 2016;5(1):32-41.