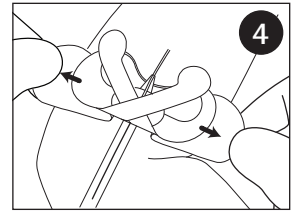
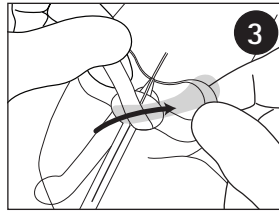
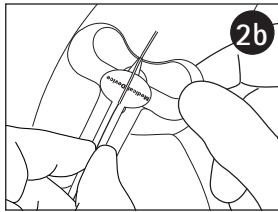
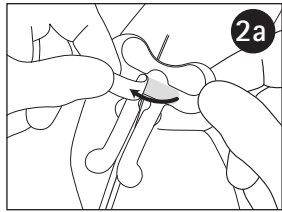
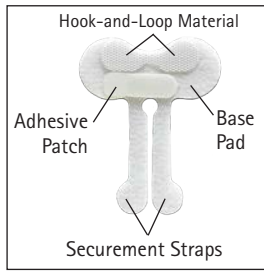


Clik-FIX[®] Neonatal PICC / Central Catheter Securement Device



REF NPS-1006B

DESCRIPTION

The B. Braun Medical Clik-FIX Neonatal PICC / Central Catheter Securement Device is an adhesive securement device (ASD) designed to provide securement and stabilization to neonatal peripherally inserted central catheters (PICCs), central catheters, and midline catheters with wings.

INDICATIONS

The Clik-FIX Neonatal PICC / Central Catheter Securement Device is intended to stabilize neonatal PICCs, central catheters, and midline catheters with wings.

CONTRAINDICATIONS

Do not use the device on compromised skin (i.e., open wounds, burns, lesions, rash, or other irritation and/or patients with known tape or adhesive allergies or hypersensitive skin).

ADVERSE REACTIONS

Skin irritation.

WARNING AND PRECAUTIONS

- Follow facility protocol when placing and removing the device. Observe universal precautions.
- Do not use a Clik-FIX device on patients who are allergic to adhesives and on non-adherent skin.

- Do not apply alcohol, acetone, or other liquid agent directly on the Clik-FIX device when in use, as it can weaken the device.
- During application and removal of the Clik-FIX device, take care to minimize manipulation and movement of the catheter.
- Prepare the skin surface according to facility protocol. Remove oil and moisture from application area and allow the area to completely dry.
- Routinely inspect the Clik-FIX device, insertion site, and catheter position according to facility protocol and best practice guidelines.
- Replace the Clik-FIX device at least every 7 days.

INSTRUCTIONS FOR USE

1. PREP

Prep and cleanse insertion site and surrounding securement area according to facility protocol. Allow the area to completely dry. Establish vascular access according to facility protocol or remove previous dressing from catheter.

2. PLACE

Remove the small release paper on the top side of the device to expose the oval adhesive patch (Figure 2a). Orient the Clik-FIX device so the straps point away from the insertion site. Carefully place the device under the wings of the catheter, making sure to align the back of the wings with the bottom edge of the device (Figure 2b). Press lightly to adhere.

3. SECURE STRAPS

Carefully fold one securement strap diagonally over the wings of the catheter, securing it to the hook-and-loop material on the base of the device. The strap should be snug against the back of the catheter wing. Cross the other strap diagonally over the first one and secure to the hook-and-loop base (Figure 3). Lightly press on the straps to adhere.

4. ADHERE TO SKIN

Remove the release paper from the underside of the device one side at a time (Figure 4). Lightly press to adhere to the skin.

5. COMPLETE DRESSING

After the Clik-FIX device is adhered to the skin, follow facility protocol for placement of dressing. Date and time per facility protocol.

REMOVAL

1. REMOVE TRANSPARENT DRESSING

Following facility protocol and stabilizing the skin, carefully remove the transparent dressing. Temporarily secure the catheter during the dressing change according to facility protocol.

2. DETACH STRAPS

Detach the top hook-and-loop strap from the base of the device, then detach the other strap.

3. REMOVE WINGS

While securing the insertion site according to your facility protocol, gently "roll" the catheter wings off the adhesive patch starting with one side of the wings.

4. REMOVE DEVICE

While securing the insertion site, remove the adhesive pad from the skin by peeling the pad gently away from the skin surface. If difficulty is encountered, use your facility's protocol for adhesive removal to weaken the adhesive at the interface between the device and the skin to loosen adhesive. Continue to carefully remove.

STERILE EO

Sterilized using ethylene oxide



Do not use if package is damaged



Do not resterilize



Single use



Consult Electronic Instructions for Use
www.bbraunusa.com

Rx only

A4809091-2 REV. 2/23

Not made with natural rubber latex.
Patent: www.bbraunusa.com/patents

B. Braun Medical Inc.
Bethlehem, PA 18018-3524 USA
1-800-227-2862

B | BRAUN