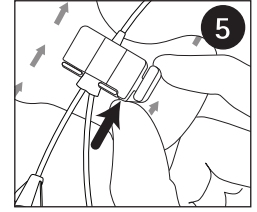
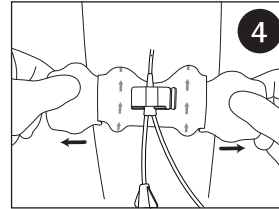
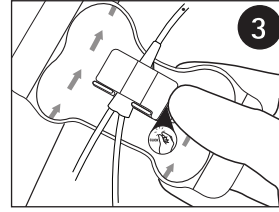
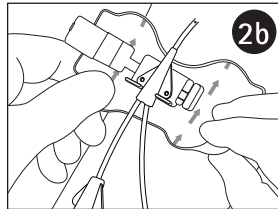
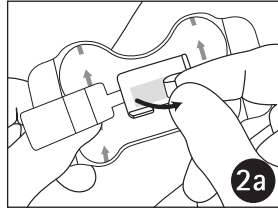
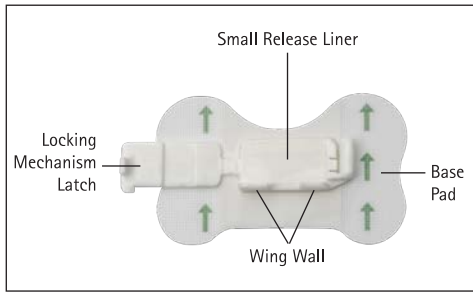


Clik-FIX[®] PICC / Central Catheter Securement Device



REF WCS-1000B
WCS-1003B

DESCRIPTION

The B. Braun Medical Clik-FIX PICC/Central Catheter Securement Device is an adhesive securement device (ASD) designed to provide securement and stabilization to peripherally inserted central catheters (PICCs), central catheters, and midline catheters with wings.

INDICATIONS

The Clik-FIX PICC/Central Catheter Securement Device is intended to stabilize PICCs, central catheters, and midline catheters with wings.

CONTRAINDICATIONS

Do not use device on compromised skin (i.e., open wounds, burns, lesions, rash, other irritation and/or patient's with known tape or adhesive allergies or hypersensitive skin).

ADVERSE REACTIONS

Skin irritation.

WARNING AND PRECAUTIONS

- Follow facility protocol when placing and removing the device. Observe universal precautions.
- Do not use a Clik-FIX device on patients who are allergic to adhesives and on non-adherent skin.

- Do not apply alcohol, acetone, or other liquid agent directly on the Clik-FIX device when in use, as it can weaken the device.
- During application and removal of the Clik-FIX device, take care to minimize manipulation and movement of the catheter.
- Prepare the skin surface according to facility protocol. Remove oil and moisture from application area and allow the area to completely dry.
- Routinely inspect the Clik-FIX device, insertion site, and catheter position according to facility protocol and best practice guidelines.
- Replace the Clik-FIX device at least every 7 days.

INSTRUCTIONS FOR USE

1. PREP

Prep and cleanse insertion site and surrounding securement area according to facility protocol. Allow the area to completely dry. Establish vascular access according to facility protocol or remove previous dressing from catheter.

2. PLACE

Remove the small release liner from the locking mechanism to expose the slightly tacky adhesive (Figure 2a). Orient the Clik-FIX device so the green arrows point towards the insertion site. Place the Clik-FIX device under the wings of the catheter, ensuring that the bottom of the wings are flush with the wing wall (Figure 2b). Lightly press catheter wings to base of device.

3. SECURE LATCH

Support the underside of the device and gently fold the locking mechanism latch over the wings of the catheter, aligning the latch with the slot on the base of the mechanism (Figure 3). Lightly press until you hear a click. You may hear up to 3 clicks depending on the size of the catheter wings.

4. PEEL AND PRESS

Remove release paper from the underside of the device (Figure 4). Lightly press down to adhere to the skin.

5. COMPLETE DRESSING

After the Clik-FIX device is adhered to the skin, follow facility protocol for placement of dressing. Date and time per facility protocol.

REMOVAL

1. REMOVE TRANSPARENT DRESSING

Following facility protocol and stabilizing the skin, carefully remove the transparent dressing. Temporarily secure the catheter during the dressing change with the provided sterile foam tape strip or according to facility protocol.

2. OPEN LOCKING MECHANISM

To open the locking mechanism, lightly push the tab on the right corner of the locking mechanism latch towards the insertion site until the latch releases from the slot (Figure 5).

3. REMOVE WINGS

Gently roll or tilt the catheter wings off the adhesive patch, starting with one side of the wings.

4. REMOVE DEVICE

Remove the device from the skin by peeling the adhesive pad gently away from the skin surface. If difficulty is encountered, apply an alcohol prep pad or adhesive removal pad at the interface between the adhesive and skin to loosen adhesive and continue to carefully remove.

STERILE EO

Sterilized using ethylene oxide



Do not use if package is damaged



Do not resterilize



Single use



Consult Electronic Instructions for Use
www.bbraunusa.com

Rx only

A4809089-2 REV. 2/23

Not made with natural rubber latex.
Patent: www.bbraunusa.com/patents

B. Braun Medical Inc.
Bethlehem, PA 18018-3524 USA
1-800-227-2862

B | BRAUN