

Clik-FIX® Peripheral Catheter Securement

REF PCSK-1011B

DESCRIPTION - The B. Braun Medical Clik-FIX Peripheral Catheter Securement Device is an integrated securement device (ISD) designed to protect the insertion site, cushion under the hub, and secure the catheter. The Clik-FIX Peripheral device is compatible with most catheters with a Luer lock connection.

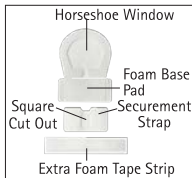
INDICATIONS - The Clik-FIX Peripheral Catheter Securement Device is indicated for use with most intravascular catheters with a Luer lock connection.

CONTRAINDICATIONS - Do not use the device on compromised skin (i.e., open wounds, burns, lesions, rash, or other irritation and/or patients with known tape or adhesive allergies or hypersensitive skin).

ADVERSE REACTIONS - Skin irritation.

WARNING AND PRECAUTIONS

- Follow facility protocol when placing and removing the device. Observe universal precautions.
- Do not use a Clik-FIX device on patients who are allergic to adhesives and on non-adherent skin.
- Do not apply alcohol, acetone, or other liquid agent directly on the Clik-FIX device when in use, as it can weaken the device.
- During application and removal of the Clik-FIX device, take care to minimize manipulation and movement of the catheter.
- Prepare the skin surface according to facility protocol. Remove oil and moisture from application area and allow the area to completely dry.
- Routinely inspect the Clik-FIX device, insertion site, and catheter position according to facility protocol and best practice guidelines.
- Replace the Clik-FIX® device at least every 7 days or per facility protocol.



INSTRUCTIONS FOR USE:

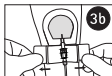
1. **PREP** - Prepare and cleanse insertion site and surrounding securement area according to facility protocol. Allow the area to completely dry. Establish vascular access according to facility protocol or remove previous dressing from catheter.



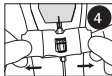
2. **PROTECT THE INSERTION SITE** - Carefully remove the release paper from the horseshoe window portion of the device (Figure 2a). While holding the base of the device, ensure exposed adhesive is facing the patient's skin. Align the transparent dressing so the insertion site is covered and the Luer lock connection is centered under the foam base pad (Figure 2b). The bordered bio-occlusive dressing should completely cover the entry site and surrounding area. Gently press to adhere to the skin.



3. **CUSHION UNDER THE HUB** - Carefully slide the base of the device under the catheter hub/ Luer lock connection (Figure 3a). Remove the center split release paper from the underside of the device one side at a time (Figure 3b). Lightly press to adhere to the skin.




4. **SECURE THE CATHETER** - Peel back the securement strap release papers half-way, being careful not to touch the adhesive. Place the securement strap so that the square cutout is centered over the Luer lock connection (Figure 4). Lightly press to adhere. Carefully remove the other half of the release papers from the securement strap and lightly press to adhere. The extra foam tape strip can be used to secure the extension tubing and/or provide additional securement. Date and time per facility protocol.



REMOVAL: Follow your facility's protocol.

Sterile when packaged in a sealed sterile pouch or when included as a component in a sterile kit.

 Consult Instructions for Use
www.bbraunusa.com
Pat.: www.bbraunusa.com/patents

 Single use
Not made with natural rubber latex or phthalates.

 Do not use if package is damaged
Rx only
A4809167-2
Ph: 1-800-227-2862 REV. 3/24