

# Clik-FIX® Soft PICC / Central Catheter Securement Device

## REF WCSK-1006B

**DESCRIPTION** - The B. Braun Medical Clik-FIX Soft PICC / Central Catheter Securement Device is an adhesive securement device (ASD) designed to provide securement and stabilization to peripherally inserted central catheters (PICCs), central catheters, and midline catheters with wings.

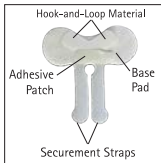
**INDICATIONS** - The Clik-FIX Soft PICC/Central Catheter Securement Device is intended to stabilize PICCs, central catheters, and midline catheters with wings.

**CONTRAINDICATIONS** - Do not use the device on compromised skin (i.e., open wounds, burns, lesions, rash, or other irritation and/or patients with known tape or adhesive allergies or hypersensitive skin).

**ADVERSE REACTIONS** - Skin irritation.

### WARNING AND PRECAUTIONS

- Follow facility protocol when placing and removing the device. Observe universal precautions.
- Do not use a Clik-FIX device on patients who are allergic to adhesives and on non-adherent skin.
- Do not apply alcohol, acetone, or other liquid agent directly on the Clik-FIX device when in use, as it can weaken the device.
- During application and removal of the Clik-FIX device, take care to minimize manipulation and movement of the catheter.
- Prepare the skin surface according to facility protocol. Remove oil and moisture from application area and allow the area to completely dry.
- Routinely inspect the Clik-FIX device, insertion site, and catheter position according to facility protocol and best practice guidelines.



B. Braun Medical Inc.  
Bethlehem, PA 18018-3524 USA  
1-800-227-2862

**B | BRAUN**

- Replace the Clik-FIX® device at least every 7 days or per facility protocol.

## INSTRUCTIONS FOR USE:

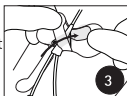
- 1. PREP** - Prepare and cleanse insertion site and surrounding securement area according to facility protocol. Allow the area to completely dry. Establish vascular access according to facility protocol or remove previous dressing from catheter.



- 2. PLACE** - Remove the small release paper on the topside of the device to expose the slightly tacky adhesive patch (Figure 2a). Orient the Clik-FIX device so the straps point away from the insertion site. Carefully place the device under the wings of the catheter, ensuring that the bottom of the wings are flush with the bottom edge of the device (Figure 2b). Lightly press catheter wings to base of device.

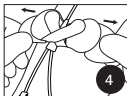


- 3. SECURE STRAPS** - Carefully fold one securement strap diagonally over the wings of the catheter, securing it to the hook-and-loop material on the base of the device. The strap should be snug against the back of the catheter wing. Cross the other strap diagonally over the first one and secure to the hook-and-loop base (Figure 3). Lightly press on the straps to adhere.



- 4. ADHERE TO SKIN** - Remove the release paper from the underside of the device one side at a time (Figure 4). Lightly press to adhere to the skin.

- 5. COMPLETE DRESSING** - After the Clik-FIX device is adhered to the skin, follow facility protocol for placement of dressing. Date and time per facility protocol.



**REMOVAL:** Follow your facility's protocol.

Sterile when packaged in a sealed sterile pouch or when included as a component in a sterile kit.

 Consult Instructions for Use  
www.bbraunusa.com

Patent: www.bbraunusa.com/patents

**2**

Single use



Do not use if package is

Not made with damaged

natural rubber latex Rx only  
or phthalates.

A4809170-2 REV. 3/24