



# ONGUARD<sup>®</sup> CLOSED SYSTEM TRANSFER DEVICE

TESTED WITH HAZARDOUS DRUGS  
BECAUSE YOU WORK WITH THEM.

# THE FIRST CRITICAL LINE OF DEFENSE

FOR THOSE WHO PUT THEMSELVES LAST.

Like you, we believe that patient safety is critical. But your safety is important, too. That's why there's OnGuard®.

OnGuard is a Closed System Transfer Device (CSTD) designed to prevent accidental exposure to hazardous drugs to you, your patients and others. You can now meet the real-world challenges you face every day with confidence, knowing you're protected.

## TESTED IN THE REAL WORLD

Because you work with hazardous drugs, OnGuard was tested for vapor containment with them—using actual chemotherapy drugs including:

- **5-Fluorouracil**
- **Cyclophosphamide**
- **Carboplatin**
- **Doxorubicin-HCL**
- **Etoposide**
- **Paclitaxel**

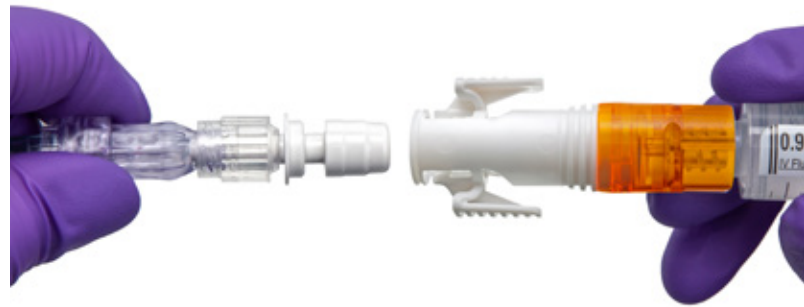
Designed to provide safety and protection as you deliver the best possible care to your patients.

## SAFETY BY DESIGN

OnGuard is the market leader in CSTD air-cleaning technology. And it's built to reduce exposure to hazardous drugs.

All due to its unique features designed to put ease-of-use and safety first:

- **Click-to-Lock Technology:** An audible "click" helps confirm a secure connection.
- **Membrane-to-Membrane Connection:** Designed for a dry disconnect.
- **Syringe Adaptor Lock:** Nonremovable for an added layer of safety for nurses and patients.



## SAFETY MADE SIMPLE

OnGuard is meant to be as easy to use as it is safe to use—helping to protect you from:

- **Harmful inhalation**
- **Skin exposure**
- **Ingestion**
- **Accidental injection and needlestick injury**

OnGuard's powerful protection is designed to improve the safety of everyone handling and receiving hazardous drugs. That's why it's tested with those same drugs for vapor containment.

It's CSTD protection designed for the real world—yours.

## MEET USP <800>

Thanks to its unique features, OnGuard also helps you meet the requirements of USP <800>, the new hazardous drug safety standard.

READY FOR  
**<800>**

Learn more at [bbraunusa.com/OnGuard](http://bbraunusa.com/OnGuard)

## COMPONENTS



SYRINGE ADAPTOR LOCK



LUER LOCK ADAPTOR



SPIKE PORT ADAPTOR