

Design Options[®] Component Guide

DESIGN tubing sets with component OPTIONS to meet your patient needs



Reduce the potential for contamination and infections while also reducing waste and SKU's

What is Design Options®?

Design Options is a customer-focused service offered by B. Braun Medical, Inc. to identify and develop solutions with IV sets that address healthcare professionals' unique demands.

B. Braun's Design Options service is a convenient and cost-effective way to provide IV sets to meet the goals of your facility. The program is designed to help you deliver quality patient care while providing you with what you need, where and when you need it. Simply select the available components, and we will assemble them into IV sets.

By using the Design Options service, it is possible to reduce waste, SKUs, and minimize costs.

B. Braun also offers a customization program for our full line of regional anesthesia products. For more information on how Design Options can work for you, please contact your B. Braun Sales Representative, Customer Service at 1-800-227-2862, or visit www.designoptionsets.com.

The Design Options Process

Step 1 Design

Our components help meet your needs.

There are various ways to design your IV set:

- Pick the available components you want to include and draw your ideal set.
- Identify a set you want us to duplicate or modify.
- Take advantage of existing designs for faster delivery.

Step 2 Non-sterile Sample

After we receive your request, we will provide you with a non-sterile sample of your Design Options IV set in about one week.

Step 3 Changes

Do you think something about your non-sterile sample should be different? Let us know and we can help you choose the components to meet your needs. Then we will send you a new non-sterile sample.

Step 4 Sterile Sample

Once you are satisfied with the non-sterile sample, we can provide a case of sterile samples of your IV set for your review prior to final production design. Most designs are available within 5 weeks.

Step 5 Design Approval and Production

When you are satisfied with the IV set, simply sign the set drawing and Design Options agreement. The design approval process is complete and production of your IV set begins. The design will be available for order within 4-6 weeks on average.

Design Options[®] your choice of components¹

Spikes and Chambers



A7406200
Universal
15 drop
Spike/Chamber



A7406101
Universal
60 drop
Spike/Chamber



A7406201
Universal
10 drop
Spike/Chamber



X77-300-022
Universal
Transfer Spike



S5069200
Non-vented
Blood Spike

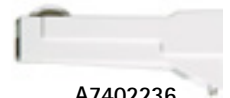
Clamps and Flow Control Devices



A7402250
Pinch Clamp



X77-398
Roller Clamp



A7402236
Blood Tubing
Roller Clamp



X58-658*
Flow Restrictor
*Actual length:
Approx. 0.25 in.*



M0770300
Standard
Non-Removable
Slide Clamp



M0731101
Mini
Non-Removable
Slide Clamp



M2921900
Blood Tubing
Non-Removable
Slide Clamp



A7402263
Heavy Wall Tubing
Removable
Slide Clamp



M2930601
Mini
Removable
Slide Clamp

Needleless Access Ports



S5403020
CARESITE[®]
Straight



S5403021
CARESITE
Y-site



S5403040
ULTRASITE[®]
Straight



S9903301
ULTRASITE
Y-site



S9909991
SafeLine[®]
Straight
Split-septum



**S9909990/
S7801000**
SafeLine Y-site
Split-septum



S9909992
SafeLine
T-port
Split-septum

Normally Closed/Backcheck Valves



S5401020S
Normally Closed Backcheck
Valve - Straight



S5401117
Normally Closed
Y-Site



S5401008
Low Pressure Backcheck Valve
Male Luer Slip



S5401011
Limited Pressure Check Valve
(with relief)



S5401071S
Low Pressure Backcheck Valve
Female Luer Lock

* Commonly used on 60 drop primary sets

1. Designs are only available for IV administration intended uses with approved components, combinations and confirmed bonding methods. Your B. Braun representative will share with you approved combinations and bonding methods.

Stopcocks



4599047
4-Way Stopcock, D500
SPIN-LOCK®



4598393
4-Way Stopcock, D400
Male Luer Slip



A7405014
4-Way Stopcock, High Flow
SPIN-LOCK



A7405015
4-Way Stopcock, High Flow
Male Luer Slip

ULTRAPORT™ and ULTRAPORT zero Luer-Activated Needleless Stopcock

ULTRAPORT zero is a unique stopcock designed to reduce the chance of catheter related blood stream infections and to simplify IV fluid or drug administrations.



A7405010
Single Port
4-Way Stopcock
High Flow
SPIN-LOCK



A7405011
Single Port
4-Way Stopcock
High Flow
Male Luer Slip



A7405023
ULTRAPORT zero
Single Port
4-Way Stopcock
High Flow
SPIN-LOCK



A7405024
ULTRAPORT zero
Single Port
4-Way Stopcock
High Flow
Luer Slip



A7405025
ULTRAPORT zero
Dual Port
4-Way Stopcock
High Flow
SPIN-LOCK



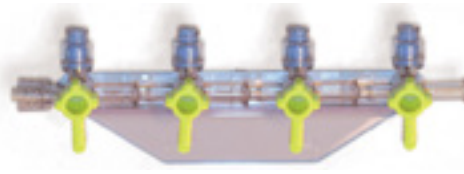
A7405026
ULTRAPORT zero
Dual Port
4-Way Stopcock
High Flow
Luer Slip

The Ultraport zero stopcock with hub disinfection before injection was associated with a significant reduction in the risk of inadvertent bacterial injection as compared to the conventional open-lumen stopcock.¹

1. Loftus R et al., "Prevention of Intravenous Bacterial Injection from Health Care Provider Hands: The Importance of Catheter Design and Handling" *Anesthesia-Analgesia* 2012 Nov; 115(5):1109-19.



A7405027
ULTRAPORT zero 3-Gang, 4-Way High Flow Stopcock



A7405028
ULTRAPORT zero 4-Gang, 4-Way High Flow Stopcock

SAFEPORT™ Manifolds



A7405021
SAFEPORT 2-Port Open Lumen



A7405018
SAFEPORT 3-Port Open Lumen



A7405022
SAFEPORT 2-Port Swabable



A7405020
SAFEPORT 3-Port Swabable

Plated Stopcocks



A7405044
3-Gang, 4-Way
High Flow Open Lumen Stopcock



A7405045
4-Gang, 4-Way
High Flow Open Lumen Stopcock



A7405046
ULTRAPORT 3-Gang, 4-Way
High Flow Swabable Stopcock



A7405047
ULTRAPORT 4-Gang, 4-Way
High Flow Swabable Stopcock

Female Adapters



M2191750S
Standard
Luer Lock



M2281204
Smallbore
Luer Lock



M2301200
Microbore
Luer Lock



M5231750S
Luer Lock with
Male Luer Slip



A7406125
Microbore
Luer Lock

Connectors



M7061400
Standard
Y-connector



M2981200
Smallbore
Y-connector



M2461200
Standard
T-connector



8504172
3 Leg Standard
Connector



M2291200
3 Leg Smallbore
Connector

Male Adapters



S5007972
Standard Bore
2-piece Sliding
SPIN-LOCK®



S5007976
Smallbore
2-piece Sliding
SPIN-LOCK



A7402894
Standard Bore
SPIN-LOCK



M2661400
Standard Bore
Fixed
Luer Lock



M2271204
Smallbore
Fixed
Luer Lock



S5007910
Smallbore
SPIN-LOCK



S3801199
Smallbore
T- Connector
SPIN-LOCK



M2311200
Microbore
Fixed
Luer Lock

Filters



A7402377 0.2 micron
A7402378 1.2 micron
A7402381 5.0 micron
In-line



A7402307
0.2 micron
Micro Volume
In-line



A7402370 0.2 micron
A7402275 1.2 micron
Low Volume
Add-on or In-line

Burettes

150 mL burette options



A7408120
60 drop, injection top,
no shutoff

A7408121
60 drop, injection top,
with shutoff

A7408122
60 drop, open top,
no shutoff

A7408123
20 drop, open top,
with shutoff



A7408124
60 drop, open top,
with shutoff

A7408125
injection top, no shutoff /
no drip chamber

A7408126
open top, no shutoff /
no drip chamber

A7408127
open top, with shutoff /
no drip chamber

Blood Filters and Hand Pumps



A7402892
High Flow
Hand Pump
with Ball
Check Valves



X71-601
Hand Pump



A7402366
170 micron
Blood Filter



A7402364
170 micron
Blood Filter

HORIZON NXT® and OUTLOOK® Pump Tubing Assemblies



S3600065
8 in. tubing

S3600027
14 in. tubing

S3600062
20 in. tubing

S3600022
20 in. tubing
with Distal
Roller Clamp

S3600031
52 in. tubing
with Distal
Roller Clamp

S3600029
62 in. tubing
with Distal
Roller Clamp

S3600026
72 in. tubing
with Distal
Roller Clamp

ULTRABLOCK™ Tubing

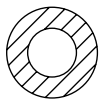
ULTRABLOCK UV resistant tubing helps to minimize decomposition of the active ingredient in IV fluid by blocking over 90% of UV light at wavelengths between 220 - 450nm4. Maximize the full benefit of the drug for the patient.



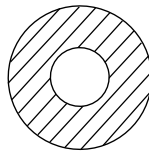
Tubing Specifications: Lengths and Sizes



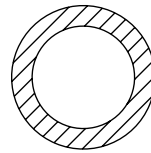
Microbore
0.020 in. I.D.
0.005 mL/in. capacity



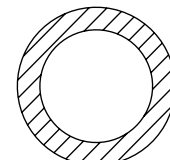
Smallbore
0.050 in. I.D.
0.032 mL/in. capacity



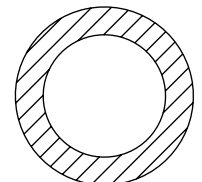
Smallbore Heavy Wall
0.060 in. I.D.
0.050 mL/in. capacity



Standard
0.108 in. I.D.
0.150 mL/in. capacity



Extension, Heavy Wall
0.110 in. I.D.
0.156 mL/in. capacity



Blood
0.120 in. I.D.
0.185 mL/in. capacity

All tubing DEHP-Free

NOTE: Tubing for illustration only, and not to scale.

Design Options® Tubing Sample and Price Quote Form

Complete this entire form including tubing lengths, bonding preferences, etc., and fax to 610-849-5461.
OR Complete the top portion with an unused sample of your set in unopened or original packaging including labeling and mail to: B. Braun Medical Inc., Attn: Brian Waselus, 824 12th Ave., Bethlehem, PA 18018

Facility Name _____

Address/City/State/Zip _____

Customer Name _____

Phone Number/Ext. _____

Title _____

Department _____

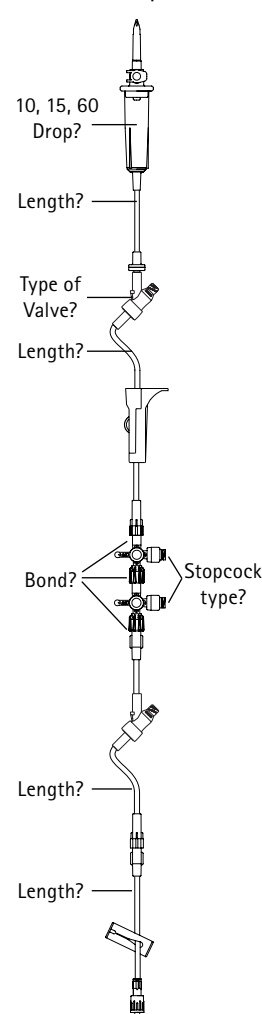
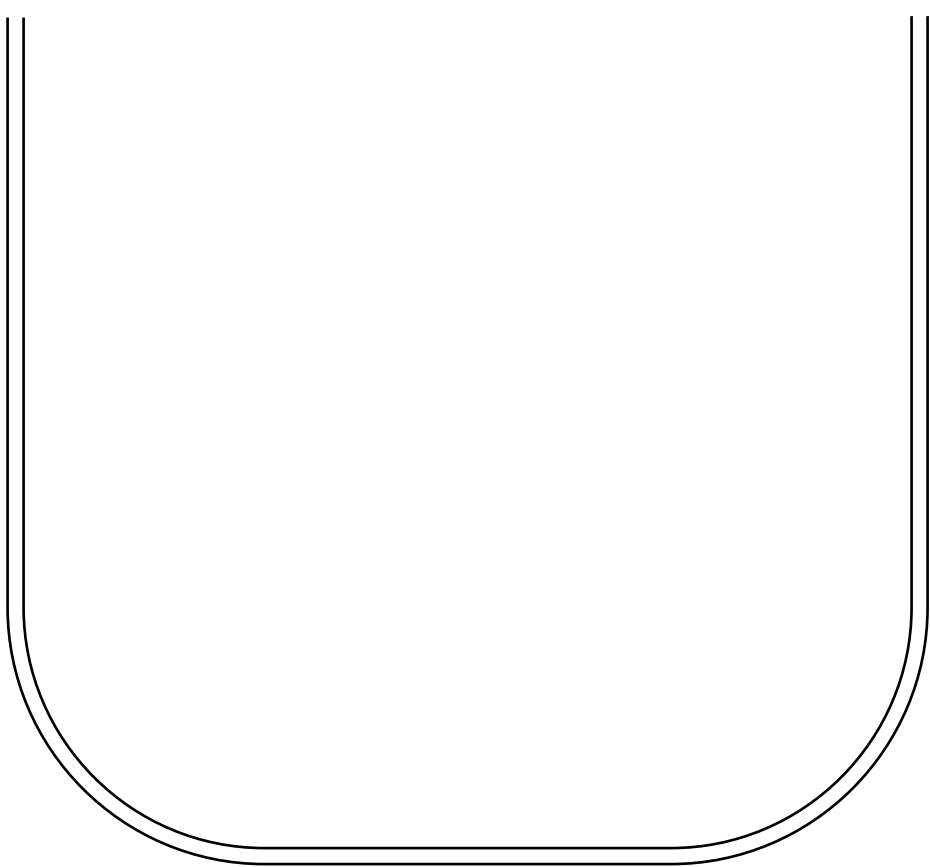
Please refer to package label and record the manufacturer name, part number, and price (if known) on the lines provided.

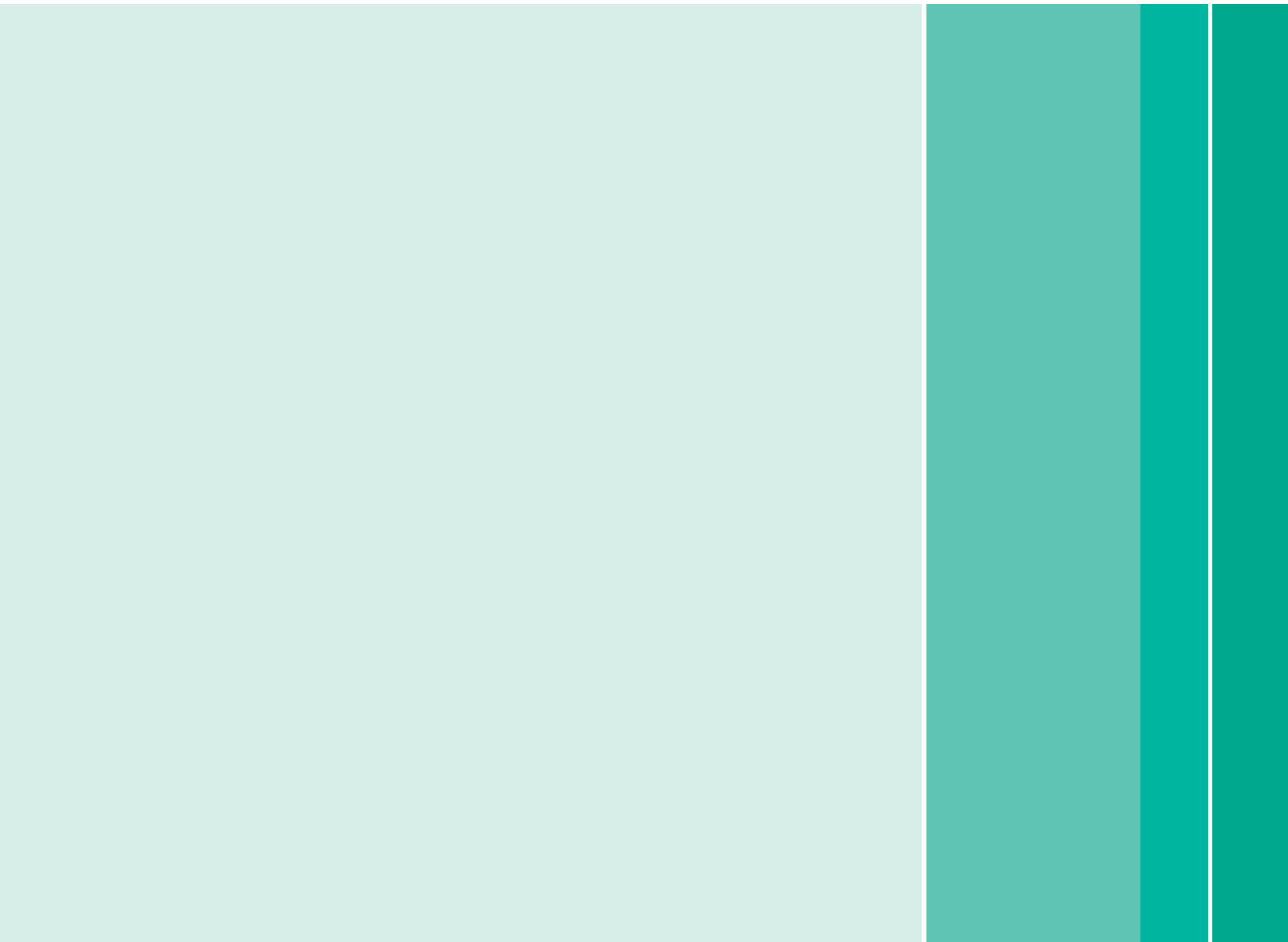
Current Set Reorder Numbers _____

Annual Units _____

Target Set Price _____

Please refer to the Design Options Component Guide for a list of available components. Mark tubing with an "X" where you would like to include a component, and be sure to clearly label component names, bonding preferences, and tubing lengths.

<p style="text-align: center;">Example</p>  <p>10, 15, 60 Drop?</p> <p>Length?</p> <p>Type of Valve?</p> <p>Length?</p> <p>Bond? Stopcock type?</p> <p>Length?</p> <p>Length?</p>	<p style="text-align: center;">OVERALL SET LENGTH? _____ inches</p> 
--	--



B. Braun also offers a customization program for our full line of regional anesthesia products. For more information on how Design Options can work for you, please contact your B. Braun Sales Representative, Customer Service at 1-800-227-2862, or visit www.designoptionsets.com.

B | BRAUN
SHARING EXPERTISE

www.bbraunusa.com